

TRADITION

FORWARD TO GREATER THINGS



VOLUME 59 NUMBER 2 WINTER 2026

contents

- 2 Built on the Shoulders of Giants
- 6 Spread the Word
- 7 Halls @ RB
- 10 Annual Report
- 22 Athletics @ RB
- 25 Alumni Events
- 28 Alumni News

President's Thoughts

Usually, winter months are long and boring as we anxiously await Spring and warmer weather. However, the winter months have been anything but "long and boring" at Roger Bacon.

We are in the process of putting together the **Class of 2030** (can you believe it!?) and by all accounts, it will be an extremely talented class. Interest in Roger Bacon remains very high as applications from eighth grade students hoping to be Spartans passed record levels from last year. Word about Roger Bacon has permeated the local community. Excellent education... outstanding culture...community service... participation in sports and extracurriculars...travel opportunities...a safe Catholic and Franciscan environment that reinforces morals and values taught at home and value for the money are just some of the reasons Roger Bacon has truly become a "**destination school**" for students and families seeking a real-life high school experience.

The **Anne Nurre Heidt Atrium** construction continues *on time and under budget*. Containing the first dedicated chapel in Roger Bacon's long and illustrious history, the impact of this transformative project on our student body and school community, now and in the future, cannot be overemphasized. An **August 11, 2026** dedication (Feast of St. Clare of Assisi) is being planned with the goal of being fully operational for the start of the 2026/27 school year.

Plans continue to move forward for an expansion of the **East Parking Lot**. Located off of Leonard Avenue in the back of the school, the expanded lot will contain approximately 110 parking spots.

Student safety will be enhanced by alleviating congestion in the current lot and incorporating a dedicated one-way entrance and exit. The goal of this expansion is to be ready for the 2026/27 school year.

Reclamation of **3 classrooms** during the summer and the addition of **2 additional teachers** will allow for expanded curriculum opportunities and maintenance of a low student/teacher ratio which has become a hallmark of Roger Bacon.

Fundraising is strong as our alum and friends have supported these vitally important projects. To date, we have raised **\$9.2 million** of the \$10 million goal with a year remaining on the capital campaign.

As we approach our 100th anniversary, there are many reasons to return to Roger Bacon and see firsthand the exciting changes to our beautiful campus. Come back and support current and future generations of Spartans with your presence, generosity, and prayers. There has never been a better time to be a Spartan!

Please keep us in your prayers as we confidently move "forward to greater things" in 2026.

**God Bless you and God Bless
Roger Bacon High School.**



Steve Schad, President





COVER: STUDENTS SIGN SUPPORT BEAM
PICTURED ABOVE: ALUMNI SIGN SUPPORT BEAM

tradition

PRESIDENT:
STEVE SCHAD

EDITOR AND DESIGN:
ALYSSA FLADING '05

ADDITIONAL EDITORS:
MELLEN MOORS-DRESSING, ANNIE KARLE '06,
KELLY KREBS '08

MAJOR GIFTS:
TOM BURKE '69
RICK SOLLMANN '68

ADMISSIONS:
ROB RICKENBAUGH '90
DENISE OTT '00

GRANTS, FOUNDATIONS, AND SCHOLARSHIPS:
TOM BILL

ADVANCEMENT DIRECTOR:
BRANDON SPAETH '11

MARKETING DIRECTOR:
NICK WILKING '10

ADVANCEMENT COORDINATOR:
LIZ FARMER-NEWTON '99

EVENING FOR EXCELLENCE:
WANDA HILL

ALUMNI ENGAGEMENT COORDINATOR:
BRIAN REED

Please note: To cut down on printing, mailing and postage expenses linked to our traditional magazine, we aim to send only one copy per household. The magazine may feature the name of one individual from each household. If any problems arise, please reach out to Liz Farmer-Newton at efarmernewton@rogerbacon.org via email. Additionally, keep in mind that you can access all magazines digitally on our website under the **Alumni** tab.

Keep in touch and stay up to date on Roger Bacon events!



Facebook - Roger Bacon High School



Twitter - @RogerBaconHS



Instagram - @RogerBaconHS



Tradition is published by
Roger Bacon High School
4320 Vine Street, Cincinnati, OH 45217
513.641.1300

Tradition

Built on the shou

Friar Roger Bacon

Long before the name **Roger Bacon** was etched on a building or worn across a uniform, it belonged to a man whose curiosity, faith, and pursuit of truth helped shape the world around him. A **Franciscan friar**, **scholar**, and **pioneer of learning**, Roger Bacon (1219-1292) believed that knowledge—grounded in faith and tested through experience—had the power to illuminate minds and transform society. This story explores who Roger Bacon was, what he stood for, and why his legacy continues to inspire the mission and spirit of our school today.

Scientific Method

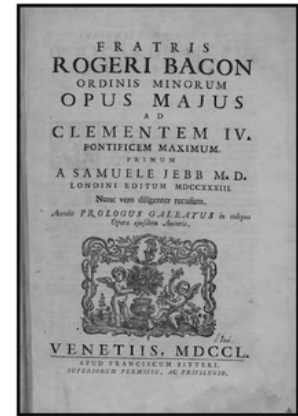
Roger Bacon espoused learning through observation and experimentation, rather than relying on established authorities and/or texts. His evidence-based approach emphasized empirical evidence and the testing of hypotheses. This laid the groundwork for the scientific method.

BACON'S SCIENTIFIC METHODOLOGY CAN BE SUMMARIZED AS:

1. OBSERVATION
2. HYPOTHESIS
3. EXPERIMENTATION
4. VERIFICATION

Opus Majus

This seminal treatise ranges over all aspects of natural science, grammar and logic, mathematics, physics, philosophy, optics, and alchemy. It demonstrates the scientific method. Roger Bacon strongly advocated the reform of education, arguing that the best means of understanding the world's creator was by close observation and precise measurement of His natural world. He held that more emphasis should be placed upon the learning of languages and the study of mathematics, alchemy, astronomy and the physical sciences.



Iders of Giants

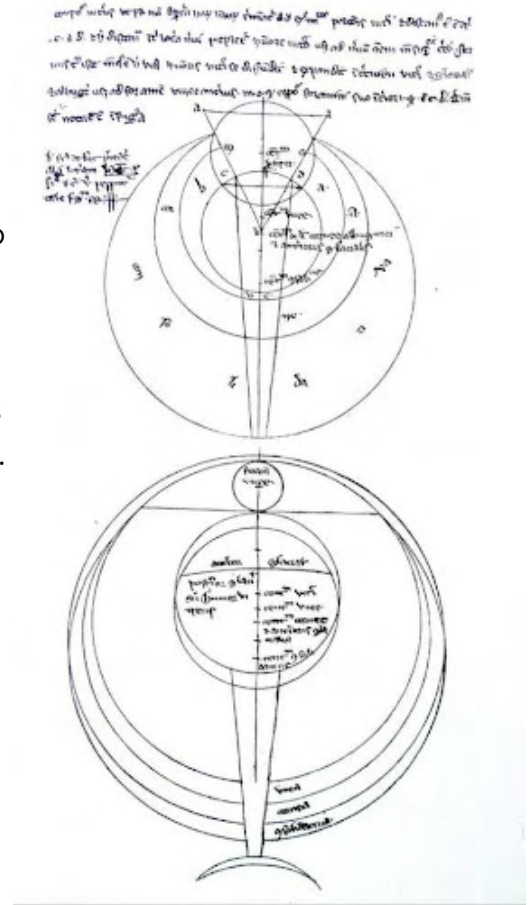
Science and Religion

Roger Bacon saw science not as separate from religion, but as a tool to better understand God's creation and to deepen religious understanding. He believed that the study of the natural world and the study of theology were not exclusive, but rather complementary and mutually supportive paths to truth.

Optics

His most important mathematical contribution was the application of geometry to optics.

He emphasized the use of lenses for magnification to aid natural vision and carried out systematic observations with lenses and mirrors. Roger Bacon was the first to theorize that lenses may have applications in the correction of eyesight, and he was also the first to apply geometry to the study of optics.



Linguist

Roger Bacon was familiar with English, French, Latin, Greek, Arabic, and Aramaic. His mastery of Greek in particular was unique in his times. He was an early advocate of the importance of studying foreign languages, including Arabic and Hebrew, for the advancement of knowledge. Roger Bacon did not learn languages as an end in itself, but rather as an important tool in learning. He believed the quality of translations at that time were so poor that any serious scholar of a topic needed to go back to the original source to avoid being badly misled.

"The conquest of learning is achieved through the knowledge of languages."

Roger Bacon

Built on the shou

Calendar Reformer

Roger Bacon believed the calendar of his time (the Julian Calendar dating from 46 BC) was not accurate. Since he was a religious man, he felt that the celebrations of holidays like Christmas were on the wrong dates. Bacon proposed a calendrical reform that led to the Gregorian calendar 100 years later – the calendar we use today.



Visionary

Roger Bacon's innovative ideas and vision of the future contributed to his reputation as a "wizard" in the eyes of his contemporaries. He imagined inventions that would take six to seven more centuries to materialize, such as:

**STEAMSHIP – DIVING BELL – SUBMARINE
– AUTOMOBILE – AIRPLANE – BINOCULAR
– TELESCOPE – LASER TECHNOLOGY**

Inventor

The magnifying glass was invented by Roger Bacon in 1268. He adapted its use as primitive spectacles, allowing scholars with failing eyesight to continue their work.

Although gunpowder was first invented and described in China, Bacon was the first in Europe to record its formula. He is credited with being the first Western intellectual to produce gunpowder after witnessing at least one demonstration of explosives from the Mongol Empire, but he kept the formula a secret lest it be used to harm anyone.



Ideas of Giants

Astronomer

Roger Bacon explored the positions and sizes of celestial objects, contributing to a better understanding of the cosmos. He believed that the Earth was a sphere and that one could sail round it. He estimated the distance to the stars and used a camera obscura (which projects an image through a pinhole) to observe eclipses of the Sun.

Bacon (Baco) is a lunar impact crater that lies in the rugged southern highlands on the near side of the moon - this crater was named after Roger Bacon. On the Moon, craters are named after deceased scientists, polar explorers, astronauts or cosmonauts.



Spread the word...Roger Bacon's admissions office is currently preparing to admit the Class of 2030, a class that will become the 102nd graduating class in our celebrated history. As the coed school of choice in Cincinnati, this year we had another record number of applicants from more than seventy-five schools throughout the tri-state. Students from all over the area are seeking out Roger Bacon for its unique Franciscan charism, and the tremendous academic, athletic, spiritual and social opportunities.

Among the amazing applicants is *Lily Montgomery*, an eighth grader from Nativity. Lily has applied to be a member of our Freshman Honors Program and also looks to join our amazing volleyball program. In reviewing essays with our applications, hers stood out as an example of the students that have made Roger Bacon such a special place for almost one hundred years. Please enjoy her essay below. We can't wait to introduce you to the rest of the Class of 2030.

Spread the Word

Welcome to the



Spartan Army!

"HIGH SCHOOL IS SUCH AN IMPORTANT PART OF LIFE. I PLAN TO GROW IN SO MANY WAYS DURING MY HIGH SCHOOL CAREER. I LOOK FORWARD TO WORKING WITH THE MANY MINISTRIES OFFERED AT ROGER BACON. I ENJOY HELPING PEOPLE AND BRINGING JOY INTO THEIR LIVES DURING TIMES OF HARDSHIP OR SADNESS. I ALSO ENJOY CELEBRATING THE SUCCESSES OF OTHER PEOPLE.

I AM A FAITHFUL PERSON LOOKING FOR A BETTER UNDERSTANDING OF THE CHURCH AND GOSPEL. I SEEK OUT CHARISMATIC PREACHERS AND LIKE TO VISIT OTHER PARISHES TO DISCOVER WHAT THEIR SERVICES OFFER. I LOOK FORWARD TO MEETING AND WORSHIPING WITH NEW CLERGY WHO HELP ME MORE FULLY DEVELOP MY RELATIONSHIP WITH GOD.

MY FAITH IN GOD ALSO HELPS ME TO BECOME THE BEST STUDENT I CAN BE. I HOPE TO BE ACCEPTED INTO THE HONORS PROGRAM AND TO PUSH MYSELF TO THE HIGHEST LEVEL OF EDUCATION IN MY ABILITY WHILE AT ROGER BACON. I WANT TO PROVE TO MYSELF THAT I'M CAPABLE OF LEARNING AND SUCCEEDING AT THE HONORS LEVEL.

I HAVE MANY GIFTS TO SHARE WITH THOSE AROUND ME AND AM HOPEFUL TO FULLY ENGAGE IN ALL THE THINGS ROGER BACON HAS TO OFFER. I ENJOY BRINGING LAUGHTER AND HAPPINESS TO OTHERS, ESPECIALLY THOSE WHO ARE HAVING A HARD TIME FINDING IT THEMSELVES. I HAVE DELIVERED MEALS ON WHEELS SINCE I WAS A BABY AND ENJOY SEEING THE FACES OF THOSE WE SERVE WHILE LISTENING TO THEIR STORIES AND HOPEFULLY BRINGING JOY TO THEIR DAY.

I HOPE TO JOIN MANY TEAMS/CLUBS AND FORM FRIENDSHIPS THAT LAST A LIFETIME. I'D LOVE TO USE THOSE RELATIONSHIPS TO HELP OTHERS ON THEIR JOURNEYS AS WELL AS FIND AREAS WE CAN HELP AS A TEAM TO MAKE ROGER BACON THE BEST SCHOOL IN THE CITY!"



Eagle Scout Project

A big thank you to **Caden Broenner '26**, who chose Roger Bacon as the focus of his Eagle Scout service project. After the original sign in our back parking lot was damaged, Caden stepped up and rebuilt the entire sign area—creating a beautiful, lasting improvement for our campus.



Bacon Bronco Raffle

Thanks to the incredible dedication of our students, staff, and the support of Spartan Nation, the **Bacon Bronco Raffle** not only met but surpassed its \$150,000 goal — raising an outstanding **\$180,930** in support of Roger Bacon students. We are thrilled to announce the winner of our 2025 Bacon Bronco Raffle! Congratulations to **Ellen Layne** - who won a new 2025 Ford Bronco Sport!

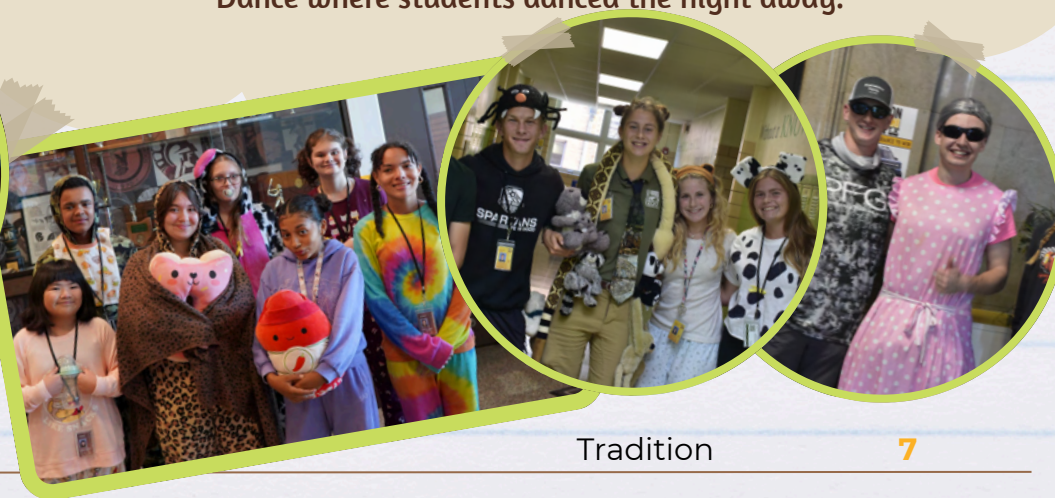
Ellen purchased her chances through her grandson, **Alex Chavez '29**. Her lucky ticket was pulled by **Amira Ramahi '27** at halftime of our Homecoming football game on Friday, October 3rd. There we a total of 10,442 tickets in the hopper and Ellen had purchased \$200 worth (12 tickets). What made it even better is that Ellen was in attendance to hear her name called! Thanks to everyone who helped make this such a success.



The Halls @ RB

Homecoming Week

Spartans celebrated **Homecoming 2025** with a week of fun. Dress down days filled the week and consisted of pajama day, a day where folks dressed as rhymes without reason, a trip to the animal kingdom and the widest age gaps the hallways have seen when students dressed their "ages." The school week was ended with the Spirit Olympics. The week capped off with some Saturday Night Fever at the Homecoming Dance where students danced the night away.





Check out the interview
with John Nimeskern '43 by
scanning this code!



Honoring our Country's Finest

Roger Bacon proudly honored the men and women who served our country during our annual **Veterans Day Breakfast & Assembly**. Over 100 veterans representing every branch of the United States Armed Forces joined us this morning alongside our entire student body. We were especially humbled and honored to welcome two World War II Veterans, classmates from the Roger Bacon Class of 1943: **John Roy Nimeskern**, United States Navy (turned 100 in August) **Paul Blom**, United States Navy (will be 100 in January). Their presence was a powerful reminder of the courage, sacrifice, and legacy that spans generations of Spartans. The assembly concluded in a moving moment of unity, as our entire school community joined in singing Taps, led by **Arnie Siegmund '63** and **Mark Zlatic '27**. To all veterans — thank you. Your service, your example, and your continued commitment to our nation inspire us today and always.



Etched in the Foundation

In partnership with our friends at **HGC Construction**, our students and faculty signed their names on a structural beam that now lives forever as part of this new space. This beam was chosen with great care — placed above the sacristy of the first dedicated chapel in Roger Bacon's history. Generations of Spartans will gather in this sacred space, with the strength of today's students literally built into its foundation. Their signatures are more than ink on steel — they are a lasting symbol of faith, community, and the legacy we continue to build together.



A FEASTival to Remember

October 4th is the **Feast Day of St. Francis of Assisi** — and on Friday, October 3, at Roger Bacon, the celebrations were aplenty.

An all school mass kicked off the day full of celebrations followed by the Spirit Olympics that helped wrap up the Homecoming Week festivities. After mass, all students and faculty headed down to the stadium for the annual **FEASTival** put on by the Spiritual Life Committee. There were games, a grilled lunch and even the highly anticipated students versus faculty water balloon toss. There were even some faculty appearances in the dunk booth!

RB3 on Tour

Throughout December, RB3 hit the grade school circuit for their annual Christmas Tour. They visited several grade schools around the area and proved that "the best way to spread Christmas cheer, is singing loud for all to hear!" Throughout each of their stops, they were able to sing with the grade schoolers and give them the opportunity to take the mic. It was a wonderful way to share their talents throughout the city in celebration of the Christmas season.



BA CON ARTS



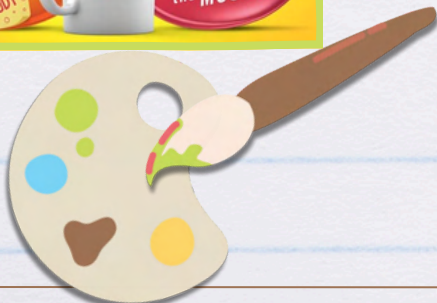
A Haunting Success

Congrats to the Cast and Crew of "The Canterville Ghost"! The production turned out to be one of RB Drama Guild's most successful plays, with TWO SOLD-OUT performances, and one of the highest RB student attendance records! Great job to the talented cast, and a huge round of applause to the all-student run crew.



COMING SOON

Be sure to keep an eye out for ticket information on RB Drama Guild's Spring musical "9 to 5". Performances will take place April 3-6.



DEAR ROGER BACON SUPPORTERS,

As we reflect on the 2024 - 25 fiscal year, we are filled with deep gratitude for the generosity of our Spartans, Angels, spouses, parents, friends, businesses, and foundations who chose to invest in Roger Bacon High School. Your support strengthens every corner of our school and ensures that a high-quality Catholic, Franciscan education remains accessible to our students.

This Annual Report recognizes all gifts received between **July 1, 2024 and June 30, 2025**. These gifts sustain our Franciscan mission and provide the resources necessary for transformative student experiences – both in and beyond the classroom.

As you browse the “**Donors by Class**” section, have some fun with it—look for friends, former teammates, favorite classmates, and familiar names. It’s always great to see who showed up to support RB this past year, and we’re incredibly grateful for everyone who did.

If you don’t see your name, do not worry. Think of it as an invitation! This year our fiscal year ends on June 30, 2026, and any gift—**of any size**—will make sure your name appears alongside the names of your classmates in next year’s report. Even better, you’ll help boost your class’s participation rate among living alumni and keep the friendly competition going.

Most importantly, this section is meant to be fun, interactive, and reminiscent of the incredible community we share. Celebrate the names you see, and if you want to join them next year, we’d love to have you. Every donor adds to the story of Roger Bacon and helps keep our Spartan tradition strong.

I know everyone is in a different phase of their life: getting married, raising families, building careers, sending kids to school. Life pulls us in many directions. However, every gift—**no matter the size**—makes a real difference. Any level of participation honors the generations who came before us and supports the Spartans of today who will carry that legacy forward.

There is tremendous momentum at Roger Bacon right now. As we move closer to our 100th anniversary, our enrollment is strong and growing, our new atrium is taking shape, and our students are thriving: leading in the classroom, competing at high levels, serving our community and growing in their faith. These improvements and opportunities are shaping an exciting future for Roger Bacon. Your support plays a direct role in making it all possible.

On behalf of the entire Roger Bacon family, **thank you** for believing in our mission, supporting our students, and continuing the proud Franciscan tradition that shapes every current and future Spartan. We are extremely grateful for all your love, support, and prayers.

With appreciation,



Brandon Spaeth '11
Director of Advancement



“
**For it is in
giving that we
receive**
-St. Francis of Assisi
”

Class of 1942

RB 7% OLA 5%

Regina Nieb +
Edward Rabe

Class of 1945

RB 0% OLA 7%

Ruth Geers Rice +
Marilyn Cisko Sheeran

Class of 1946

RB 0% OLA 10%

Mary Kelly Koenig +
Margaret Menner Roll
Marie Schulte Schoettmer

Class of 1947

RB 5% OLA 0%

Robert Dineen

Class of 1948

RB 12% OLA 3%

Robert Buckmeier +
Louis Flamm +
George Glandorf
Betty Jane Huebener-Sandoz
Donald LaRosa

Class of 1949

RB 10% OLA 12%

Rosella Doecker
Anita Suer Hartman
Nancy Stich Huffner +
Caryl Alfin Kane
Joan Elfers Knecht
Richard + Pohlkamp
Roger Sand
Carol Kleingers Schwieter
Peter Sciamanna
William Stegeman

Class of 1950

RB 6% OLA 3%

Nicholas Hoesl
Patricia Stevens-Klosterman
Merle Ann Koenig
Jack Marshall
Earl Molloy

Class of 1951

RB 28% OLA 4%

Allen Barrow
William Bross
Mary Jane Stark Esposito
Daniel Evers
Bernard Giesler
Lawrence Humbert
Mary Lee Tombragel-Kuechly
William Lammert
Joseph Willig

Class of 1952

RB 16% OLA 10%

Mary Ann Rolfes Bross
Mary Jean Michel-Buckmeier

Louis Dellerman
G. Donald Doppes
Raymond Meyer
Catherine Albonetti-
Michels
Charles Moulliet
Donald Pohlman
John Raleigh
Rose Seufert Sicking +
Marylin Zirkelbach-
Sininger +

Class of 1953

RB 30% OLA 4%

Richard Arand
John Bok
Gilbert Born
Theodore Brackman
Ronald Dauwe +
Raymond Deidesheimer
Richard Doppes
Patricia Slatery Grote
Frank Haggerty
Mary Jane Arnult Knueven
Charles Michel
Daniel Rettig
Donald Roettele
Thomas Shumate
James Sicking
Jeanne Brueckner Townsend

Class of 1954

RB 36% OLA 8%

James Brausch
Bonnie Kuhl Busch
Frederick Corsmeier
Harry Cramer
Robert Kispert
Jerome Kistner
James Koch
Gerald Koehne
Thomas Kugele
Carol Weisbrod Lichtenberg
Elizabeth Schmolt Lusheck
Carolyn Kreienbaum McMahon
Audrey Mertens Merrill
John Monaco
Daniel Sauer
Mary Boeh Schneider
Edward Schrand
John Ventre
George Wagner
Kenneth Wiesman

Class of 1955

RB 32% OLA 12%

Joanne Zimmer Bonno
Richard Breslin
Mary Haggerty Curran +
George Daumeyer
Nancy Seiter Donahue
Rudy Gerbus
C. Jack Haap
Bruce Hesketh
Rosalie Barone Hesketh

Donald Hoffmann
Shirley Seiler Hofmann
Michael Kearney
August Kramer
LaVerne Armbruster Krismer
Carl Labmeier
Raymond Linesch
Frank Listermann
Jack Lührman
Joseph Monaco
John Pilgrim
George Rolfes
Ronald Sabelhaus
Jane Ann Lammert-
Schildmeyer
Judith Apke Smith
Helen Fields Tingle
Frank Weyer
Thomas Wittkamp

Class of 1956

RB 25% OLA 12%

Raymond Albrinck
Barbara McKeague Baker
Lois Dietz Beck
James Bertke
Thomas Brockman
Jesse Bullock
Darlene Fey Carovillano
Peter Carusone
Mary Ann Barrow-
Fesenmeier
John Fierro +
James Gehring
James Hudepohl
Helena Schnitker Isfort
Robert Isfort
Bernadette Noonan Listermann
Ronald Marconet
Mary Pat Penwell McQueary
William Meyer
Jean Federle Myers
John Nieman
Paul Rapien
Janet Brigger Rayburn
Carl Roskopf
Richard Witte Theis
Marvin Tibbetts
Charles VonderMeulen
Dianne Wolf Westrich
Suzanne Ohe Weyer
Richard Zirkelbach

Class of 1957

RB 37% OLA 19%

Mary Ann Hofmann Albrinck
Ronald Albrinck
Vincent Angeline +
George Appelman
Charlene Boehmer Asbach
Patricia Geisel Babey +
Jerome Bok
Robert Breitbeil
Richard Clarke
Robert Conrad
Timothy Coombs

Mary DeMaria +
Bernard Dressman
James Falls
Virginia Byrnes Fisher
David Frey
Terrance Geisen
Rita Doerger Gullette
Thomas Hamons
Jerome Harmeyer
Richard Harmeyer +
Robert Hauck +
Thomas Herbert
Oscar Hoffmann
Carole Saupe Hoffmann
Dale Hoffmann
David Jasper
John Kerth
Joseph Kiefer
Thomas Kiefer
Susanne Mayer Kurzhals
Thomas Lammert
Betty Eppinghoff Lehn
Robert Lemmink
James Michel
James Mitsch
Thomas Moser
Gerald Neumann
Ruth Borchers Obermeyer
Joseph Palermo
James Pies
Andrea Franzone Pomfrey
Helen Russo
Marcia Logsdon Ruwe
Richard Scheuerle
Joan Hart Spires
Pamela Siegel Swafford
Clare Schulte Tempel
Paul Tonniss
Marilynn Wehrman Weil
Robert Wess

Class of 1958

RB 31% OLA 12%

W. John Albrecht
Edward Armbruster
Dennis Bausch
Diane Hardig Bertke
William Buschmann
Donna Hughes Cefalu
Nancy Ernst Conrad
Eileen Lockwood Coombs
Robert Dashley
Connie Stavale Dressman
Denis Driscoll
John Flanigan
Ernest Franz
Joseph Frey
Robert Gertz
Ronald Gueterman
Mary Ann Heimert
Joseph Hoesl
Lucy Fulton Hulsman
Kenneth Kesterson
Ronald Korb
Betty Lou Smithers Landy

ALTHOUGH GREAT CARE WAS TAKEN IN PREPARING THIS REPORT, ERRORS MAY OCCUR. IF YOU NOTICE A MISTAKE,
PLEASE ACCEPT OUR APOLOGIES AND CONTACT THE ROGER BACON ADVANCEMENT OFFICE BY EMAILING
BSPAETH@ROGERBACON.ORG

Class of 1958 cont.

Ruth Pahren Linesch
 Denis Maddock
 Michael Maier
 Carl Meyer
 Albert Moeller
 James Murphy
 Robert Penick
 Rosemary Servizzi Rettig
 Jerry Runnels
 Rita Link Schraer
 Sheila Reynolds Stanton
 Edward Stark
 Louis Stickley
 David Vandivier
 Carl Wehrfritz
 Frederick Zaenkert

Class of 1959

RB 24% OLA 11%

Eric Abell
 Richard Arszman
 Ralph Artmayer
 Bernard Bacevich
 Robert Berner
 Alvin Bock
 William Broxterman
 Richard Cappel
 Joan Hehmann Dempsey
 Joyce Norton Dudley
 Phyllis Kemme Durbin
 Kathleen Meyer Eilerman
 Carolyn Zepf Glenn
 Thomas Goldschmidt
 Michael Haap
 Eric Heaton
 Ruth Holthaus
 Theresa Wolke Johnson
 James Jones
 Richard Klus
 Louis Metz
 Herman Mollmann
 Carol Lee Cosgrove Morgan
 Mary Schnetzer Nastold
 Geraldine Smith Ortman
 Carol Wesseler Schmidt
 Frank Schmidt
 Kenneth Schrand
 Edward Tenkman
 Frances Witte Theis
 Albert Welage
 A. Darryl Wiesenhahn
 Robert Witte
 Timothy Witzeman
 Robert Wolterman

Class of 1960

RB 23% OLA 6%

David Albrinck
 Victor Boehm
 Carol Day Bonapfel
 Angela Brown Charron
 Theresa Halloran Dashley
 Richard Dierkes
 James Doerger
 Richard Doerger

Gerald Elfers
 Philip Engel
 Richard Faillace
 Larry Gildea
 Elizabeth Klus Goins
 Patrick Gorman
 Patricia Campbell Heitfeld
 Charles Helmes
 Marianne Schickner Hoffmann
 Jeffrey Kalb
 Mel Kemme
 Thomas Kreienbaum +
 Robert Kroeger +
 Roger Krummen
 James Lammert
 John L'Estrange
 Carl Lienhart
 Roger Luken
 Mark Margeson
 Paul Marischen
 Michael Meister
 David Merkle
 Joseph Mollmann
 Helmut Neurohr
 William Ruch
 Joanne Telintelo Schrand
 Thomas Schweitzer
 George Stegeman
 Robert Stuck
 Stephen Szucs
 Terry Tedesco
 Kenneth Witsken
 Eugene Wolke

Class of 1961

RB 22% OLA 10%

Charles Agricola
 Linda Genheimer Albrinck
 Sandra Strubbe Armbruster
 Virginia Baringhaus
 John Boland
 Raymond Brenner
 James Buckley
 E. Anthony Crowe
 Paul Dinwiddie
 Eugene Domis
 Raymond Drake
 Gary Eve
 Leo Franz
 Joseph Ganim
 Rose Schulte Gerversman
 Cecelia Craig Gleisinger
 William Grewe
 W. Kenneth Hanna
 Frances Bosse Helner
 Rita Hart Jones
 Paul Jordan
 Sue Schrand Kathman
 Lawrence Klosterkemper
 Kenneth Kluener
 William Klus
 Gary Koettel
 Douglas LeVasseur
 Arthur Maines
 Carol Smith Merkle

Thomas Niehaus
 Roger Perdrix
 Albert Roberts
 John Ruschulte
 Michael Schlosser
 Paul Schmidt
 Theodore Schoch
 Paul Schoster
 Wayne Serraino
 Daniel Smith
 Nicholas Snider
 Charles Specht
 Robert Steltenpohl
 Gilbert Stevens
 Charles Teufel
 Stephen Thomas
 E. Allan Wolf

Class of 1962

RB 21% OLA 15%

Susan Hess Bacevich
 Gerald Berding
 Bernice Schmalz Bishop
 Karen Leonhardt Brothers
 Patricia Schnorbus Buerger
 James Collins
 Vernon Cornelison
 Constance Flaig Dinwiddie
 Gerald Doerger
 William Dorsch
 Joan McClanahan Drake
 James Ernst
 Leslie Fugikawa
 Allen Gerth
 David Grimm
 Lawrence Handorf +
 James Hoenninger
 James Hoffmann
 Al Humbert
 Thomas Hurst
 Marlene Herrmann Kalb
 Joseph Karaus +
 Thomas Kathman
 Carl Langenderfer
 Paul Lyons
 Carol Armbruster Meehan
 George Meiners
 Joanne Benedetti Miller
 Clare Hoehn Roberts
 Donald Rohling
 Mary Jo Hinterlong
 Royston
 William Ruwe
 Richard Ryan
 Patricia Johnson Schlosser
 Doris Fey Schmaltz
 Marilyn Henlein Scott
 Linda Huy Smith
 Robert Staab
 Gerald Sunderhaus
 Mary Ann Tenhunfeld
 John Werle
 Daniel Westerbeck
 Louis Woycke
 Roger Zanitsch
 Marilyn Becker Zerhusen

Class of 1963

RB 27% OLA 11%

Dennis Atkinson
 Raymond Beck
 James Beischel
 Louis Bok
 Earl Bolender
 David Buschle
 Thomas Dehmer
 John Esselman
 Charles Fulmer
 Anthony Gertz
 Donald Haap
 Michelene Milazzo Heeg
 Robert Heeg
 Robert Herrmann
 Victor Hildebrand
 Elaine Tenkman-
 Hinnenkamp
 James Hinnenkamp
 John Hoffmann
 Michael Jordan
 Jose Van Praag Koettel
 Kathleen Wehrfritz Lazarus
 Patricia Flynn Lienhart
 Donald Lindeman
 Lawrence Luken
 B. Lynne Mc Carthy Mayo
 David Meyer
 Richard Moore
 Edward Nies +
 Victoria Kuhn Otting
 Donald Ottke
 Gerald Palermo
 Judy Brecht Perdrix
 Marlene Dunigan Petit
 Robert Plum
 Ronald Prickel
 Wilbert Probst
 Charles Roemer
 Anna Lee Roth Rosen
 Carole Loescher Ruschulte
 Gerald Schatzman
 Thomas Schneider
 William Scotti
 Joseph Siebenburgen
 Arnold Siegmund
 Michael Sliter
 Kenneth Smith
 James Stanton
 John Tergerson
 Stephen Vollmar
 Theodore Watkins
 Thomas Weaver
 Terry Weaver
 Michael Wenning
 David Westerbeck
 Richard Westrich
 Elaine Speeg Widomski
 E. Stephen Wirth
 Norman Zins

Class of 1964

RB 27% OLA 12%

Paul Ammann
Margaret Artmayer
Michael Benedetti
Kenneth Broussard
Jeffrey Brunner
Barry Burke
Gerald Dacey
Judy Boehm Doerger +
Gerald Domis
Howard Fahrmeier
Nancy Tarter Gerrein
Karen Pfeiffer Gerwel
Janet Louis Gildea
David Jones
Joseph Korte
Raymond Ludmann
Michael McGowan
Charles Milazzo
Robert Monteith
Joseph Morganroth
Gerald Muennich
Patricia Schulte Munafo
Marilyn Nesselhuf
Jean Benjamin Niesen
Daniel Nurre
James Nuxoll
Robert Rickenbaugh
Albert Sagel
Dennis Sauer
Donald Schlosser
Marilyn Schwiers
David Steinwert
Robert Wallenhorst
Betsy Abell West

Class of 1965

RB 21% OLA 7%

Bernard Beck
Kenneth Blankenbuehler
James Breyer
James Brigger
Gerard (Rusty) Brinkman
Thomas Bruser
Jane Kalb Drewes
Thomas Esenbock
David Foley
Raymond Geoppinger
Thomas Groh
Daniel Hanekamp
Paul Hartkemeyer
Paul Hennessey
Michael Jansen
James Klus
Dennis Lauck
Janice Brueggemeyer
Ludwig
Edward Luhn
Margaret Nierlich Marsh
Robert Matsik
Kenneth Mattscheck
James Miller
Donna Millay
Montgomery
Angela Kaestle Salem

William Schmidt
Lawrence Schneider
Gerald Schoettmer
Gene Servizzi
Patrick Sexton
David Siebenburgen
Sue Anne Reinhart Snell
Raymond St. Clair
Gregory Staley
Mary Lou Campbell Stark
Kenneth Stoll
Elizabeth Rusche Stoll
Donald Willen

Class of 1966

RB 21% OLA 9%

Michael Ballinger
Linda Schneider Beck
John Beiting
Anthony Bonno
Roger Brehm
Marlene Nagel Bryant
Richard Burger
John Cannon
Donald Drott
Walter Fitzpatrick
Mary Ehrhard Freese
Thomas Gelhausen
Anthony Gerstner
Michael Grause
Emily Beumer Gustafson
Bill Heffron
James Hodapp
Mel Hoffmann
Jane Huelsebusch
Jerome Klefas
Mary Calder Leonhardt
R. Lee Mairose
Martin McCormack
Patrick McGowan
Nancy Henninger Meyer
Ruth Deitsch Moeddel
R. Thomas Moorhead
Terry Nieman
Frank Niesen
N. David Noe
David Oberrecht
Jerry Pasqualetti
Linda Huwel Peters
Pedro Ramirez
Gary Rapien
Philip Reichle
Elaine Baer Schildmeyer
Michael Schildmeyer +
Robert Seigel
Ronald Seiler
Maureen Pfeiffer Taylor
Timothy Timmel
James Uhrig
James Wilson

Class of 1967

RB 28% OLA 10%

Donald Auciello
Fred Bause
Thomas Beyersdoerfer

Timothy Binder
Thomas Bockerstette
Janet Beck Browning
John Butz
Carol Abel Carraher
John Carraher
Kathi Santoro Clark
James Dunphy
Donald Eversman
Claire Kettler Fedasch
Patrick Fox
Christine Meiners-
Geoppinger
Cynthia Vollmer Grady
Alan Hartkemeyer
Robert Hauser
Judith Weingartner Haynes
Michael Henschen
Vicki Hill
Judith Horn Holter
Charles Johansing
Kenneth Klus
Kenneth Knollman
Robert Lang
Larry Linz
Paul Meyer
Donald Meyer
John Meyman
Thomas Oberrecht
Gary Oelrich
Michael Rolf
Robert Sandhas
Sharon Wallenhorst Schildmeyer
Kristine Kowalski Schoettmer
Patricia Wicktora Schulkers
Linda Jenkins Schumacher
Charles Schwegman
Jerry Snellgrove
Lawrence Speeg
David Stentz
Paul Stewart
Mark Thomas
Douglas Timpe
David Tobergte
Stephen Villari
John Wachter +
Rodney Weeks
Joseph Wolke
Denis Zahner

Class of 1968

RB 36% OLA 8%

Marlene Mulcare Auciello
Evelyn McCafferty Bardua
Phillip Bauer
Steven Bleser
Timothy Boehm
Albert Boehmer
John Brecht
Kurt Breitenstein
John Bressler
David Breyer
Gary Brichler
Gary Broenner
Richard Brotherton
Patrick Brunner

Bruce Bruzina
Stephen Bunch
Dale Chouteau
James Clark
Stanley Condo
William Danneman
Lawrence Danner
Thomas Denterlein
Jeanne Iding Enzweiler
Dennis Esterkamp
Robert Even
Thomas Fariello
Kenneth Feldmann
Gary Fey
Charles Furlong
Michael Gantt
Steven Geiger
Mary Stoll Graviss
Thomas Hattersley
Bonita Burke Henschen
Steven Hetzel
Robert Huhn
James Humbert
Ferd Johansing
John Kerr
Linda Reichert Kinsler
Geoffrey Meisner
Richard Merz
Daniel Miller
Gerald Miller
John Moorehead
David Moorhead
Daniel Moran
Robert Obert
Robert Oldendick
Mark Ossege
Robert Passmore
Joseph Pratt
James Reinhart
J. Robert Rice
Kathie Davies-
Rickenbaugh
Mark Rizzo
Linda Day Rohrer +
Bernard Rumpke
Robert Saal
Thomas Sauer
Paul Schneider
obert Schnelle
George Schultz
Alan Schutte
Roger Schwarb
John Schweitzer
Rick Sollmann
Kenneth Stehlin
Richard Tucker
Steven Wietlisbach
Mark Wissel
William Woerman
Gary Yancey
Thomas Yockey

Class of 1969

RB 26% OLA 11%

JoAnn Norton Ballinger
Edward Brunner

Thomas Burke
John Burns
Michael Burns
Susan Coleman Burns
LaVerne Janson Clark
Terrence Clark
Robert Coogan
Linda Kelsey Corcoran
Sue Timmerman Crosby
James Dahmann
Thomas Doddy
Gary Dooros
Timothy Dvorak
Mary Kay Kuhn Engelman
Raymond Faller
David Fossaluzza
Michael Frayne
Roger Friedmann
Tricia Haynay Friedmann
Thomas Fullen
John Gilkey
Gary Glazier
David Goan
Donald Hamburg
John Harmeyer
Michael Hauser
Denis Hoffmann
Joseph Hollmann
John Homoelle
Diane Stritholt Homoelle
Gregory Jarvis
Jeffrey Jurgens
Barry Kalb
Thomas Kasselmann
Martha Klems
James Kurre
Evelyn Rollingner
Landrigan
Gilbert Linz
Raymond Maffey
Michael Mahlenkamp
Thomas Mauntel
Mark Meyer
James Meyer
Paul Mohr
James Niebling
C. Edward Noe
Joseph Rahn
Daniel Rice
Robert Schrenk
Janet Bedinghaus Terry
Jean Meister Theis
Kenneth Tonnis
Michael Truman
Gary Vaughn
Jack Wesseler
Patricia Kilfoil Wietlisbach
John Wilson
Mary Lou Kettler Zestermann
Stephen Zinser

Class of 1970

RB 17% OLA 13%

David Albert
Janet Hamburg Beckemeyer
Roger Stritholt Bedinghaus
Diane Hoffman Bonno
Donald Brockman
Nancy Brodbeck
Gail Broermann Brunner
Douglas Burks
David Clark
Joseph Dattilo
David Denterlein
Christine Olding Dooros
Louis Eyman
Thomas Federle
Jerome Foley
Patricia Gilkey Frey
Dominic Gutierrez
Robert Helms
Ralph Henke
Barbara Rumpke Holmes
Michael Holtzleiter
David Kamp
Joseph Kempe
Robert Marchant
Thomas Mauntel
Linda Fago Miller
Michael Monahan
Cindy Blind Moorhead
Susan Sammons Neal
Paul Niehaus
Jane Niehaus
Christopher Noe
John Pumpple
David Rapien
Norma Rumpke Rapien
Robert Rath
Peggy Leonhardt Remke
Michael Sanzere
Ronald Schnelle
Evelyn Schwiars Schott
Sandy Lakes Schrenk
Mary Lou Sundrup Slattery
Michael Stoll
Michael Sweeney
John Uhrig
Gregory Wall
Joseph Wright
Dennis Yockey

Class of 1971

RB 21% OLA 11%

Timothy Ballinger
Robert Bannister
Cindi Stritholt-Bedinghaus
Herbert Blackburn
Nicholas Bunch
Mary Kelly Bunch
Wayne Carucci
Michael Cioffi
Phyllis Klems Collord
James Cooper
Chris Balzer Doppes
Susan Dorward
Steve Dunphy

Richard Eversman
Fred Ewald
Mark Friedman
Frank Gallina
Linda Bertke Gelhaus
Stephen Glaser
Teri Buerman Glaser
Jeanne Hines Harjo
Pam Maycox Hazard
Darlene Fishter Heidel
Jerome Herbe
Michael Hetteberg
Stephen Jackson
Robert Jasper
Alan Kalb
Pam Krause Kalb
James Kiefer
Kenneth Kistner
Philip Louis
Ronald Lynch
Mark Mc Allister
Nancy Ulm Meier
Theresa Rosen Mitchell
Herbert Mueller
Russell Obermeyer
William O'Shaughnessy

Class of 1972

RB 19% OLA 12%

Thomas Siebel
Stephen Singer
Gregory Smith
Richard Sparer
Jeffrey Vorholt
David Waters
Donald Webb +
E. Randall Weinert
John Welling
Leo Zureick
Albert Bailey
Joseph Balzer
Richard Bens
Eric Bostick
Frank Broermann
William Bross
Linda Hampel Brown
Donald Burbrink
Mark Burger
Timothy Burks
Gregory Buschmann
Michael Cooper
Lori Thamann Dattilo
Regina Rollinger DeLay
Robert Ebbeler
Kathy Bracken Eby
Debbie Kathman Ewald
Patricia Day Fossaluzza
James Giebel
Lynn Moriarty
Hammersmith
Carol Brodbeck Hinnenkamp
John Hodapp
Tonia Sherman Jasper
Gloria Beck Johnson
Mary Ann Kasselmann
Mary Geiser Lammert

Michael Macht
Daniel Mc Curdy
Stephen McDavid
Nancy Ochs McDonald
Joan Coors Miller
Timothy Muldoon
Steven Oberjohann
Mark Piepmeier
Robert Reckers
Catherine Kelsey Reeve
Karen Manuel Rieman
Herman Rumpke
John Rumpke
Mary Ann Schmidt
Richard Schoettmer
Donald Seig
Robert Smith
Joanne Doppes Smith
Bruce Staley
Barry Staley
Mark Wietmarschen
Thomas Zins
Richard Zureick

Class of 1973

RB 16% OLA 5%

Gregory Benkert
Roger Bosse
Thomas Brausch
Tim Brotherton
Steven Brown
Joseph Burke
Michael Carroll
John Ceddia
C. Gregory Cobb
Thomas Cunningham
Terry Donovan
Ray Eckes
Michael Emming
Joseph Gallina
Timothy Geiger
Lyle Glazier
Richard Hahn
Kevin Hampel
William Hausfeld
John Herrmann
Marianne Feldmann
Hodapp
Mary Hoffmann
Thomas Joseph
Linda Gleason Lane
David Laub
Beth Schaplowsky Marting
Mary Kistner McGinnis
William Rath
Edward Ratterman
Debbie Rother Schoenhof
Mark Schulenberg
Joseph Seta
Timothy Sexton
Robert Stiens
Jo Ann Todd Tonnis
Stephen Tonnis
John Zureick

Class of 1974

RB 20% OLA 8%

Jane Barnes Abell

William Ash
James Barrow
Thomas Bennett
Nancy Schaupp Bock
John Boehm
Joseph Breyer +
Mary Mouch Casebolt
James Ceddia
Joseph Chaulk
John Church
T. Michael Coddington
Gregory Curran
Anthony DeGiuseppe
Vincent Demasi
Ronald Ehler
John Feldmann
Patrick Findley
Michael Freese
Frank Gettelfinger
Gary Hagedorn
Kevin Huxel
Keith Kacner
Barbara Moeller Kalb
David Kamphaus
James Koenig
David Koenig
Andrew Kreidenweis
Mark Lakes
John LaRosa
Gary Lemming
Mark Leonhardt
David Maffey
Marie Budinsky
Maher
George Mayer
William Mechley
Sally Kelsey Merkle
Thomas Merkle
Patrick Mogavero
James Morsch
John Mushaben
Daniel O'Hara
Paula Weyer Parsons
James Pulskamp
Jana Eckerle Rouse
Mark Sause
David Schildmeyer
Robert Schoenwetter
Theresa Milazzo
Schweitzer
Steven Sheblessy
Michael Stenger

Class of 1975

RB 19% OLA 8%

Steven Alverson
Ronald Ballman
Paul Boehm
James Boehner
Marianne Macht
Boehner
David Brady
Ronald Brausch
Walter Bucher
Paul Bushelman +
Rita Mollmann Cooper

Mark Cummings
Thomas Denier
Thomas Dorr
Barbara Mages Ehler
James Gardner
Neal Gellenbeck
Jan Gilkey
Christopher Hollmann
Robert Hurm
Gary Janson
August Kamphaus
Mark Klosterman
Robert Knodde
Mary Sue Wietmarschen-Koenig
Mark Korte
Dennis Krause
Michael Krzynowek
Jeffrey Lampe
Frederick Landenwitsch
Paul Meisenhelder
Michael Meyer
John Niebling
John Nierlich
James Rice
Steven Roth
Debra Haeufle Runk
Patricia Sammons
Cheryl Lyons Schildmeyer
Terry Sershion
Richard Siekemeyer
Marilyn Meyer Smith
Anthony Thomas
Deborah Hampel Wagoner
Gerard Wall
Karen Schulte Williams
Michael Young
James Zeisler
James Zins

Class of 1976

RB 18% OLA 7%

Anthony Albanese
Thomas Alverson
Joel Beck
Timothy Burke
W. Alan Burke
Dennis Cooper
Carl Deutsch
Dan Diegmueeller
Felicia Domineack
Gary Doppes
Tamara Rechel Feldmann
John Gottschall
Christopher Harmon
Terrence Huxel
Thomas Johansing
Ronald Knollman
Phillip Koenig
John Kuhlenberg
Richard Luken
Susan Kalvin Maguire
Eugene Meister
Timothy Mikolajewski
Karen Sexton Moore
Stephen Steve Mueller

Robert Mushaben
Gail Doppes Nierlich
Lawrence Peddenpohl
Julie Laux Post
Stephen Radike
Robert Rumpke
Ralph Sagel
Timothy Smith
Donald Spillane
Margaret Hinderer Story
Judie Hermes Sturm
John Timmel
Barry Whitton
Bruce Wietlisbach
Class of 1977
RB 12% OLA 12%
David Abs
Steven Asbach
Martha Cobb Barrow
William Blom
William Cohn
Donald Dorr
Margaret Foley
John Geers
Francis Geiser
Mary Ann Geiger-
Gellenbeck
John Gerke
Frank Gottschall
Pamela Weyer Gottschall
Gail Staubach Kelly
Douglas Kelsey
Robert Kreyenhagen
Linda Janning Linton
Mary Judge Meister
Michael Neltner
James Nurre
Kent Nusekabel
Kenneth Pitcher
Daniel Reilly
Brian Ruter
Robert Schaeper
Daniel Sullivan
Elaine Freese Ungruhe
Daniel Weber
Janice Eilers Weller
Michael Woodhouse
Gayle Glazier Woulms
Lisa Wright
Thomas Zureick
Class of 1978
RB 16% OLA 4%
Steven Anneken
Mary Beth Kathman Asbach
Janet Rumpke Bresciani
Patrick Burke
William Dermody
Robert Disser
James Dorr
Daniel Egbers
Kenneth Finke
David Gerding
Catherine Kuhlberg-
Gerrety
Jeffrey Gettelfinger
Thomas Gilkey
Michael Grimes

Timothy Haller
David Herbe
Roger Howell
Terry Kent
David Knecht
Mary Lou Meyer Manegold
James Mc Mahon
George Menchen
Donald Morsch
Michael Murray
Steven Murray
Frank Perry
Edward Rumpke
David Rumpke
Thomas Stall
Michael Sullivan
Michael Trimbach
Steven Vennemeyer
Peter Wessel
Class of 1979
RB 14% OLA 5%
Mary Beth Smith Adams
Daniel Blaut +
Paul Boehm
James Breidenstein
Debbie Gulette Brennan
Kurt Brickweg
Harry Brown
Timothy Coogan
Douglas Dunphy
Daniel Gilene
William Grimme
Parnelli Groh
Laura Glassmeyer Hagen
Donald Harmeyer
Gregory Hauer
Christopher Hoffer
William Thad Houchens
Christopher Isfort
Ann Rengering James
Maurice Korte
Andrew Kraemer
Richard Meyer
George Moody
Mary Sullivan Pulskamp
Michael Rademacher
Kenneth Radziwon
James Sicking
James Stegeman
Timothy Tensing
D. Blaine Webb
Michael Weyer
Thomas Wiegele
Thomas Wood
Class of 1980
RB 13% OLA 5%
Robert Alverson
Mark Asbach
Sharon Rumpke Bachman
Mark Ballinger
Robert Becks
John Beiersdorfer
Timothy Brennan
Robert Combs
David Dorr
John Engel

David Feldman
David Goertemoeller
Gary Goldschmidt
Matthew Hagen
Joseph Harris
Teresa Heglin
Joseph Hennies
Katie Carter Kempe
John Lindeman
Mary Anne Merkle-
Lindeman
Paul Mitsch
Michael Murray
David Mushaben
Kenneth Niehoff
Ronald Pfister
David Rengering
Joseph Ruter
Joseph Scheidler
Daniel Segrist
Jeffrey Souza
Donald Speed
Michael VonderMeulen
Class of 1981
RB 12% OLA 8%
Kathy Loudin Anneken
Sharon Donnelly Bohlen
Daniel Busken
Richard Ceddia
Timothy Fuerbacher
Walter Gerbus
Mary Ann Faust-
Gettelfinger
John Gilkey
Todd Goedde
Daniel Hartmann
William Jett
Peter Kelsey
Joseph Lambert
Kathy Meinking Morris
Jennifer Holden Mouty
Richard Mouty
Cheryl Carrelli-
Mushaben
Angelo Noe
James O'Brien
Jerry Schildmeyer
Bridget Donovan-
Sheehey
Mark Shooner
Paul Vonder Meulen
Mark Westerfeld
John Wiehe
Michele Davis Wood
Class of 1982
RB 8% OLA 3%
Joseph Barnes
Ronald Bellman +
Gregory Carrelli
Robert Dehner
Brian Eve
Ed Franchi
Alan Gerbus
Denise Haarmann
Ben Hawkins
Michael Huseman

Thomas Marks
John Murphy
Kimberly Mayborg-
Niehoff
Douglas Olberding
David Raffenberg
Gregory Schildmeyer
Susan Hill Siegel
Class of 1983
RB 10% OLA 5%
Gregory Anderson
Anthony Andreotta
David Baker
Joan Boback Eckart
Thomas Eckart
Suzanne Laux Engel
Michael Engel
Harry Ghuman
Timothy Gray
John Jennewein
Joseph Lengerich
Carl Nissen
Timothy Rayburn
David Scully
Stacy Rengering Shumate
Matthew Skinner
Kirk Vonderhaar
Susan Walsh Wagers
Michael Waldeck
Michael Wood
Class of 1984
RB 10% OLA 4%
Andrew Ceddia
Lisa Fitch Cocco
Dominic DiBartolomeo
Steven Elsasser
James Goertemoeller
Thomas Hoffmann
Ronald Meyer
Michelle Knapp Minella
Gregory Norris
Jerome O'Neal
James Radziwon
Brian Rebholz
Thomas Steinmetz
Thomas Whitehead
Elizabeth Kelsey Wilking
Robert Wilking
Class of 1985 - 6%
Theodore Alverson
Christopher Chapman
Michelle Crawford Gleeson
R. Bryan Kroeger
Katherine Riegert Leary
John Murray
David Quijano
Timothy Rechel
Paul Rengering
Thomas Royston
Kenneth Schafer
William Selenke
Julie Lavanier Whitehead
Class of 1986 - 5%
Heather Arszman-Lamb
Jack Asher
Jennifer Rohrig Asher

Mark Bollmer
Andrew Dorr
James Jim Fister
Christopher Lemmink
Timothy Rosmarin
Susann Rozum
Class of 1987 - 3%
Theresa Ungruhe Auer
Darlene Gulette Bollmer
Gregory Ernst
Stephen Glassmeyer
Corinne Kalla Greenberg
Daniel Hauck
Class of 1988 - 4%
Danielle Edmonds
Patrick Grimes
Mary Beth Klosterman
Henning
Donna Kathman Mechley
Gregory Radziwon
Jane Moeller Sottosanti
Christopher Speed
Brian Wolf
Lisa Mulligan Wolf
Class of 1989 - 5%
John Bucalo
Richard Hunter
Jennifer Miller Keith
Tracy Tenhundfeld Mayers
Michael Morelli
John Sarley
Jason Sauer
Jane Smiley
Class of 1990 - 7%
Joanna Auciello
John Beresh
John Blessing
Robert Rickenbaugh
Kimberly Heeg Sarley
Kristin Lamarre Sims
Brian Stadnik
Jennifer Haire Waning
Christine Geers Weintz
Kevin Westendorf
Class of 1991 - 5%
Alexander Albrinck
Theresa Berger Bosse
Derek Doerger
Jennifer Pugh Hansert
Ernest Hayes
Carissa Wietmarschen-
Hellmann
Timothy Hellmann
Eric Schulkers
Class of 1992 - 2%
D. Michael Carroll
Tricia Tenhundfeld-
Rohling
Joseph Schlosser
Class of 1993 - 4%
Melissa Duddy Curran
Kevin Gulette
James Katsaounis
Peter Knippenberg
Matthew Schlotman

Class of 1994 - 4%

Michael Gould
Kenneth Maltry
Victoria Russell
Andrea Lemmick Schwartz
Sara Sova Vonderwish
Mark Wehby

Class of 1995 - 3%

Katie Gutzwiller Callahan
John Cleary
Alexander Meacham
James Steinau
Emily Clark Weigand
Katherine Ward Weigand

Class of 1996 - 5%

Jennifer Auer
Angela Boeh Bova
Theresa Bruno Calimlim
Katherine Rickenbaugh
Dykes
Abigail Hunt Ghering
Brian Kasselmann

Class of 1997 - 7%

Aaron Alexander
Joseph Ayers
Raymond Butler
Rachel Kettenacker Butler
Marcella Hinkel Ernst
Jamie Dooros Hoffman
Emily Merz Krans
Christopher Schlichter
Kathy Gullette Schlichter
Aaron Schmits
Jeffrey Schrenk

Class of 1998 - 4%

Monica Torline DeMeglio
Jason Ernst
Charles Metzger
Brian Smith
Iris Miller Wainscott
Thomas Watkins

Class of 1999 - 4%

Elizabeth Farmer-Newton
Stephen Heitz
Amy Hollmann Huerkamp
Samuel Merkle
Andrew Perazzo
Andrew Royston
Maria Starkey Ushupun
Emily Hollmann Verst

Class of 2000 - 2%

Mathew Newton
Denise Gullette Ott
Christopher Ott

Class of 2001 - 6%

Benjamin Asbach
Catherine Utz Bock
Steven Bock
Dale Hodapp
Daniel Huerkamp
Christopher Sheppard
Carrie Tucker
Lois Zins

Class of 2002 - 3%

Joseph Barrow
Bryan Hemingway
Tim McCoy
Kimberly Ernst Reed
Beckham Wyrick

Class of 2003 - 3%

Jennifer Joerger-Batchelder
Kevin Breckenridge
Frances Knecht Buchert
Laura Monterosso Clapper
Mary Brunner Sutton

Class of 2004 - 2%

Clare Zlatic Blankemeyer
Lisa Lasita Gerke
Matthew Hagen

Class of 2005 - 3%

Lauren Socol Dickson
Sara Faller
Alyssa Carlotta Flading
Matthew Moore
Elizabeth Williams

Class of 2006 - 1%

Justin Walsh
Victoria Auer Zink

Class of 2007 - 1%

Courtney Hausfeld Mueller

Class of 2008 - 2%

Eric Brichler
Allison Wilson

Class of 2009 - 1%

Benjamin Barnes

Class of 2010 - 2%

Kelsey Morgan Barnes
Nicholas Wilking
Lynde Devlin Wilking

Class of 2011 - 4%

Scott Alverson
Nathan Sketch
Brandon Spaeth
Tanner Sprong
Gus St. Clair

Class of 2012 - 1%

Nicholas Luken

Class of 2013 - 1%

Matt Brichler

Class of 2014 - 2%

Ruggiero DeLuca
Hannah Neal Monnig

Class of 2017 - 5%

Jeordon Kuderer
Rena Koch Luken
Alexander Martin
Abigail Merz
David Mills

Class of 2018 - 1%

Kaylee Sunders

Class of 2019 - 3%

Paige Spaeth
Luke Stewart
Shea Suggs

Class of 2020 - 2%

Catherine Hummeldorf
Josiah McGee

Class of 2021 - 2%

Benjamin Alexander
Elizabeth Crigler
John Hackney

Class of 2022 - 1%

Elisabeth Rickenbaugh

Class of 2024 - 1%

Jonathan Reilly

Class of 2025 - 11%

Conor Andrews
Joe Britton
Mariah Gaines
Carlie Grosser
Leah Hackney
Macy Holt
Allyson Hughes
June Needham
Brady Rickenbaugh
Myla Rodenberg
Kelsey Sander
Jake Snyder
Raegan Waller
Nathan Weigand

EFE Sponsors

Franciscan Friars of-
Our Lady of Guadalupe
Roger Bacon Alumni-
Association
Fort Washington-
Investment Advisors
Mary Cormier
Frederick Funeral Home
Wanda W. Hill
Kelsey Chevrolet
Roger Bacon Underwater-
Hockey Team
Ryan Murphy Insurance
Engel and Associates, LLC
Larry Klosterkemper
Ken and Bernice Reeder
Brian and Lisa Wolf
Auer Kitchens
Barnes Dennig
Hodapp Funeral Home
Anne McKinney
Herb Mueller –
Mueller Roofing Distributors
Marcia Ruwe
David and Cheryl Mushaben
Rick and Kathy Sollmann
The North Side Bank
& Trust Co.

EFE Patrons

Bernie and Sue Bacevich
Tom and Tricia Bill
Bernice and Tom Bishop
Gary and Beth Brichler
Barb Brodbeck
Tom Burke
Ray and Rachel Butler
Jim and Kathi Clark
John and Barb Coyle
Ray Faller
Matt Jr. and Brittany Hagen
Wanda Hill
Al and Kathy Humbert
Laura Murrer and Greg Jarvis
Tim and Carly McCoy
Anne McKinney
Donna Mechley
Jeff and Kim Mumper
Scott and Joy Mumper
Jim and Mary Pulskamp
Marcia Ruwe, Ph.D. '57
Steve and Carol Schad
Rick and Kathy Sollmann
Brian and Lisa Wolf

EFE Donors

Matthew and Toni Alander
Ben Alexander
Derrick and Carmen Amend
Lisa Andrews
Steve and Mary Beth Asbach
Kathleen Badinghaus
Sean and Kelly Ballinger
Todd and Kate Bedinghaus
Gerry and Ann Berger
Bernice and Tom Bishop
Perry and Nancy Bock
Roger and Theresa Bosse
Gary and Beth Brichler
Everett D. Britton
Barb Brodbeck
Tom and Ellen Burke
Jamie and Nikki Burke
Cathy Callahan
John and Robin Ceddia
Sean and Lindsey Curfiss
Sharon D'Sousa
Maury Drummey/Jerry Diersing
Claire Fedasch
Brian Feldhaus/Mindy Sheppard
Bob Finley
Friend of Roger Bacon
Keith and Amanda Geraci
Rob and Abby Ghering
Donald and Debbie Haap
Matt and Laura Hagen
John and Bridgette Hagen
Matt Jr. and Brittany Hagen
Robert Hagen
Joe Hetzer
Leah Hill and Mike William
Wanda W. Hill
Dennis Hoying
Ellen Hughes

Al and Kathy Humbert
Chad Hungler
Mike and Kimberly Jackson
Ben and Mary James
Andrea Janovic
John and Sophie Jennewein
Laura Kamphaus
Richard and Gail Kelly
Mike and Melissa Keuffer
Bryant and Amy Kleinfeldt
Dave and Cindy Knecht
Thomas and Patricia Kraemer
Todd and Karen Majors
Denise McCabe
Anne McKinney
Bro. Gene Mayer, OFM
CJ and Carrie Meiners
Sam and Madeleine Merkle
Tom and Sally Merkle
Doug and Maria Merkle
Dan and Cristal Mollner
Tom Moser
Jeff and Kimberly Mumper
Lance and Amie Murphy
Julia Neumann
Jay and Jennifer Otto
Gerald and Sue Palermo
Michelle Peters
Geoff and Maureen Pinyard
Jon Powers
Jim and Mary Pulskamp
John and Cynthia Pumpple
RB Alumni Association
Ken and Bernice Reeder
Connie Reinhardt
Dan and Midge Rice
Robert and Kristin Rice
Roger Bacon High School
Marcia Ruwe
Patty Sammons
BJ and Beth Sander
Scott and Haidee Schlegel
Fr. Ric Schneider, OFM
Matt and Andi Schneider
Skip and Kris Schoettmer
Ken and Pat Schulkers
Marty and Andrea Schwartz
William Shula
Ryan and Nikki Smith
Kyle and Jen Snyder
Rick and Kathy Sollmann
Chris and Kim Speed
Audrey Stites
Ryan and Jennie Strode
Don Vonderhaar
Trent and Rene Wall
Molly Weitlauf
David and Sandra
Westerbeck
Mark and Jennifer Westerfeld
Randy and Kyle Wiles
Rob and Liz Wilking
Ebony Williams
Jamie Worley

EFE Business Donors

Apke Total Restoration
Athenian Restaurant
Bona Decorative Hardware
Bud Herbert Motors, Inc.
CEI Sports
Cincinnati Sports Club
Crossgate Lanes
DelightMore
Denny McKeown's-
Bloomin'Garden Centre
DriverEd Academy.com
Forward Edge
Great Parks of Hamilton-
County
Jake Sweeney Automotive
Josten's
Kentucky Horse Park
LaRosa's Corporate Offices
Massage Envy - Newport
Mr. Tuxedo, Inc.
Natorp's Nursery Outlet
North College Hill Bakery
Peter Gregory Florist
Richter and Phillips Jewelers
Roger Bacon Admissions
Roger Bacon Athletics
Service Graphics
Sound Body Jazz Orchestra
Schwartz Jewelers
Taft Museum of Art
The Bonbonerie
The Carnegie of Covington
The Web Extreme-
Entertainment
Theater Management Corp.
Thunderdome Restaurants
Velvet Smoke BBQ
Village Junction
Vonderhaar's Market
Wiedemann's Brewery
West Side Brewing
Widmer's Dry Cleaners
Zins Plumbing

Businesses, Organizations & Foundations

The BDK Fund
Larosa's Inc
Arszman & Lyons
Walt Roeckers Memorial
Edelweiss Foundation
Unnewehr Family Foundation
RB Alumni Big Band
Delightmore
HGC Construction
Engel and Associates, LLC
Taft, Stettinius & Hollister, LLP
Forward Edge
Frederick Funeral Home
Kelsey Chevrolet
Fort Washington-
Investment Advisors
The Province of-
Our Lady of Guadalupe
Ghering Dental Company
Dan Blaut Memorial Fund

The Heidt Family Foundation
Velvet Smoke BBQ
Cincinnati Catholic-
Cemetery Society

Friends of Roger Bacon

Charity Accurso
Irene Amann
Philip Anderson
Larry Babel
Katie Balz
John Barrett
Johanna Becker
Steven Bellman
Teresa Benkert
Ken Beringhaus
Dennis Berning
Julie Beyer
Lois Biddle
Thomas Bill
Tricia Bill
Thomas Bishop
Catherine Blythe
James Bok
Laura Boyle
Robert Breitenstein
Elizabeth Brichler
Donna Brigger
Everett Britton
Barbara Brodbeck
Nichole Burke
Jennifer Burke
Cathleen Callahan
Mark Cappel
William Carey
Jacqueline Chesher
Andrea Childress
Kay Clark
Patrick Clark
Alex Cline
Lauren Cobble
Jonathon Cole
Christine Coleman
Ella Colina Hollingshead
Angela Conrad
Mary Cormier
Miranda Couch
John Coyle
Barb Coyle
Jeffrey Craven
James Crowley
William Curry
Richard Dammel
Paul Dasilva
Ingrid Davenport
Lauren DeFranco
Stephanie Donley
Bridget Douglas
Joseph Dvorak
Amy Dwyer
Julie Eaves
Mary Frances Rogers
Ehrenfels
Michael Elsass
Sally Evans
Alaine Fertick
Michael Finan
Thomas Fiorini

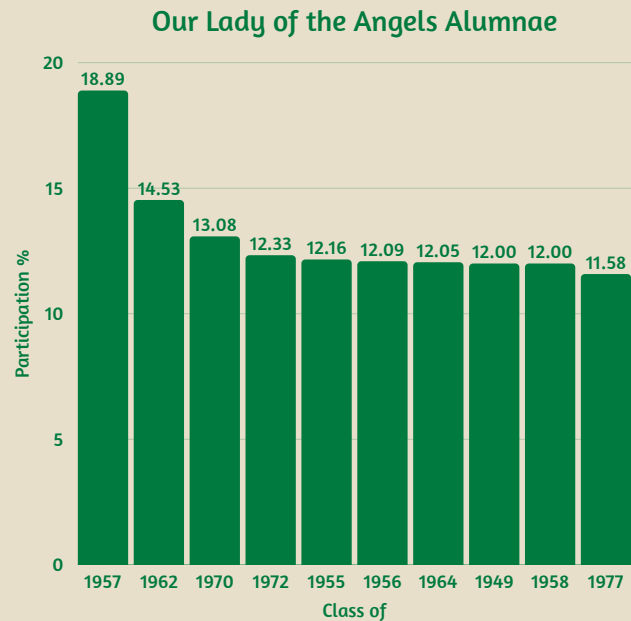
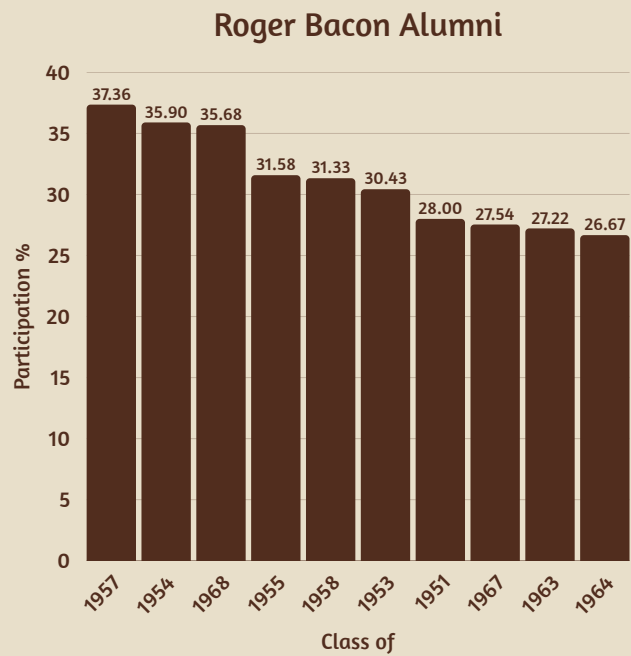
Jenny Fletcher
Rex Fletcher
Richard Fulwiler
Kelly Fulwiler
Jeff Fulwiler
Alicia Gaines
Peggy Gamble
Alicia Gamel
Lindsay Garrison
Amanda Geraci
Mary Jean Girard
Toni Gleason
Holly Goetzman
Sharon Goodcase
Roger Grein
Kathryn Groh
Christine Guyer
Steve Guyer
Nicholas Hahn +
Clarissa Harmon
Amanda Hatfield
Sharon Hattersley
Joe Hetzer
Wanda Hill
Thomas Hock
Kristina Holloway
Steven Honkomp
Benjamin Hostler
Christina Huber
Chad Hungler
Richard Hunt
Rick Hunt
Laura Hutzler
Tabitha Ibarra
Ann Ivancic
Kim Jackson
Katie Jacob
Ben James
Frank Jasper
Jan Jones
James Kalla
Pamela Karaus
Heather Kaufman
Mike Keuffer
John Kidwell+
Gina Kleiman
Charles Knapke
Olivia Koch
Cecilia Kohlman
Thomas Kraemer
Amy Krajewski
Stephen Krebs
Emily Kreutzjans
Melissa Kurzhals
Ned Lautenbach
Joyce Ledwin
Richard Legere
Jeannie Leo
J. Timothy Leonard
John Linton
Holly Lottman
David Ludwin
Emily Luken
Karen Majors
Todd Majors
Aileen Martini
Gene Mayer
Richard Mayer

Michelle Mays
Anne Mc Kinney
Andrea McBride
Eric McCauley
Ann McCormick
Jessica McIntyre
James Meade
Regina Mechley
Maria Merkle
Lori Merz
Edward Meyer, Jr.
Mindy Miller
Jayne Miller
Joe Miller
Michael Misleh
Amy Mohr
Carol Mollmann
Theodore Moran
Carol Morison
Lisa Muccillo
John Mullen
Scott Mumper
Joy Mumper
Kim Mumper
Jeffery Mumper
Anne Murphy
Ryan Murphy
Mary Beth Murphy
Julie Murray
Sandra Muse
Wesley Neal
Lydia Neiheisel
Eric Neuhaus
Julia Neumann
Margeaux Nice
Joan Nickert +
Kellie Noszka
Belinda Novotnij
Carolyn Ottke Moore
Stephanie Owens
Susan Palermo
Angela Parker
Michelle Peters
Julie Pfeifer
Shirley Pfeifer
Becky Pitcher
Brian Reed
Katie Reed
Kenneth Reeder
Bernice Reeder
Catherine Rewwer
Maureen Richard
Mary Rolfes
Janet Rosmarin
Sunny Rottenberger
Elizabeth Rottenberger
Donald Ruberg
Heather Ruehl
Jennifer Rumpke
MaryKay Ruwe
Darryl Sandri
Steven Schad
Steve Schaefer
Jasper Schellingerhout
Roxane Schellingerhout
Scott Schlegel
William Schmidter

Carmen Schrand
Geneweze Serrano
Erica Shoemaker
William Shula
Karen Shull
Steven Smith
JJ. Kyle Snyder
Steven Sollmann
Kathleen Sollmann
Diana Sova
Bridgette Spaeth
Tony Spaeth
Jennifer Spears
Wayne Specht
Judith Stalford
Daniel Starkey
Jennifer Starr
Ken Stecher
Tina Stegman
Robert Stephens
Jennifer Stewart
Audrey Stites
Jill Stoxen
Lauren Strouble
Stephanie Suttchenko
Wayne Tate
Thomas Tepe
Michael Tonniss
Eva Trentman
Dennis Tunningley
Kathleen Turan
Thomas Turan
David Uetrecht
Robert Uhl
Matthew Ulliman
Lisa Ulliman
Jill Veach
Julie Vehorn
Angie Vice
Michael Viox
Joanna Voss
Matthew Voss
Melissa Wagner
Trent Wall
Rene Wall
Robert Wallace
Erin Waller
Maria Walther-Willard
Erika Ward
Maureen Ward
Ann Welling
Liz Wells
Joann Wess
Beverly West
Raymond Westrich
Paul Westrich
Jenny Whitman
Christopher Wilke
Michael Williams
John Wimberg
Lester Wittekind
Lindsey Wolfe
Anthony Wright
Lynn Yockey
Timothy Zimmer
Julie Zinser

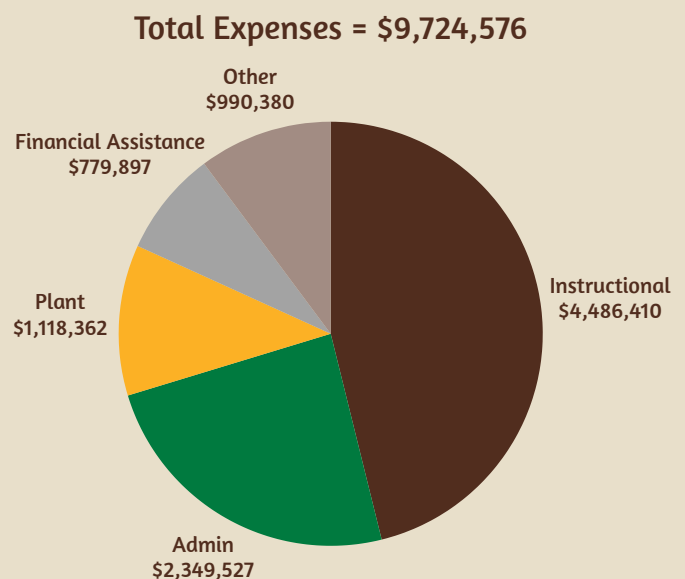
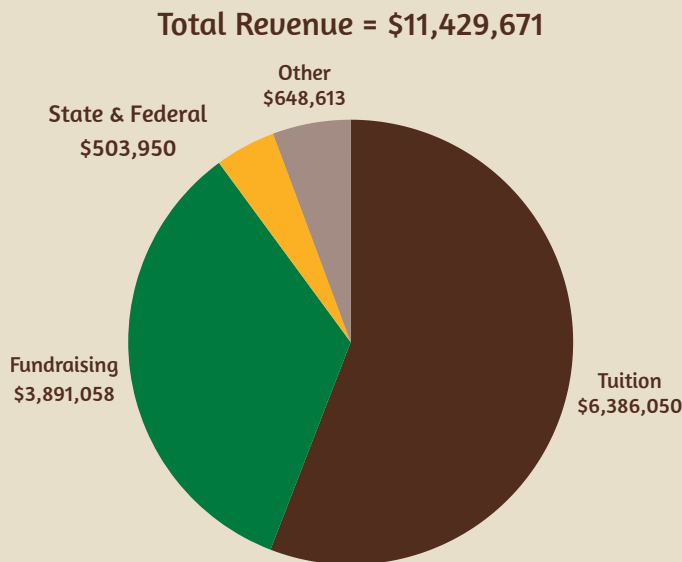
TOP TEN 2024/25

Based on class participation of living alumni for donations from July 1, 2024 to June 30, 2025



FINANCES 2024/25

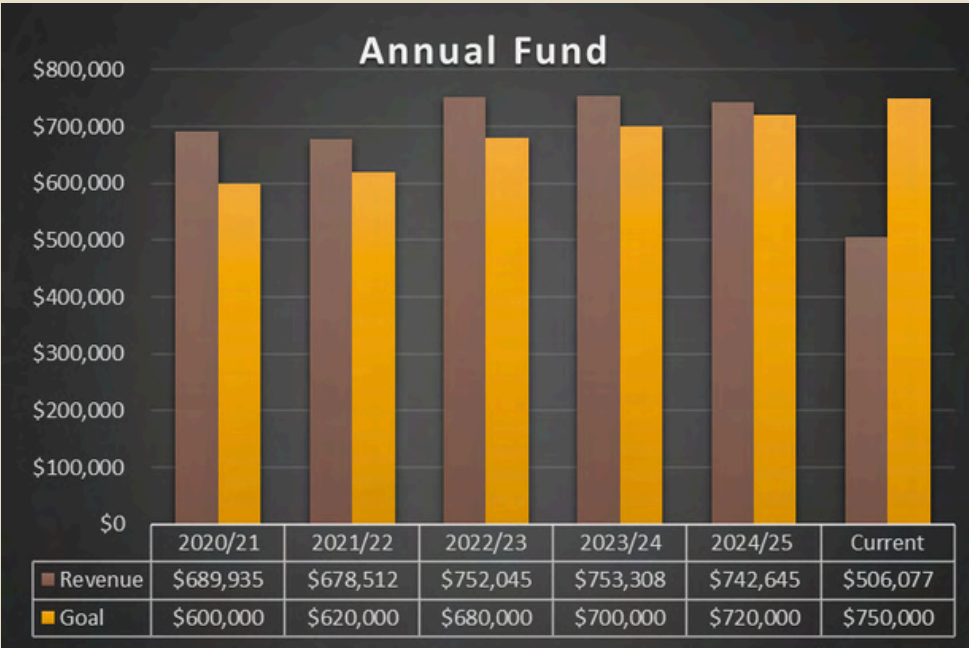
Based on all financial activity that took place from July 1, 2024 to June 30, 2025



ANNUAL FUND DRIVE (AFD)

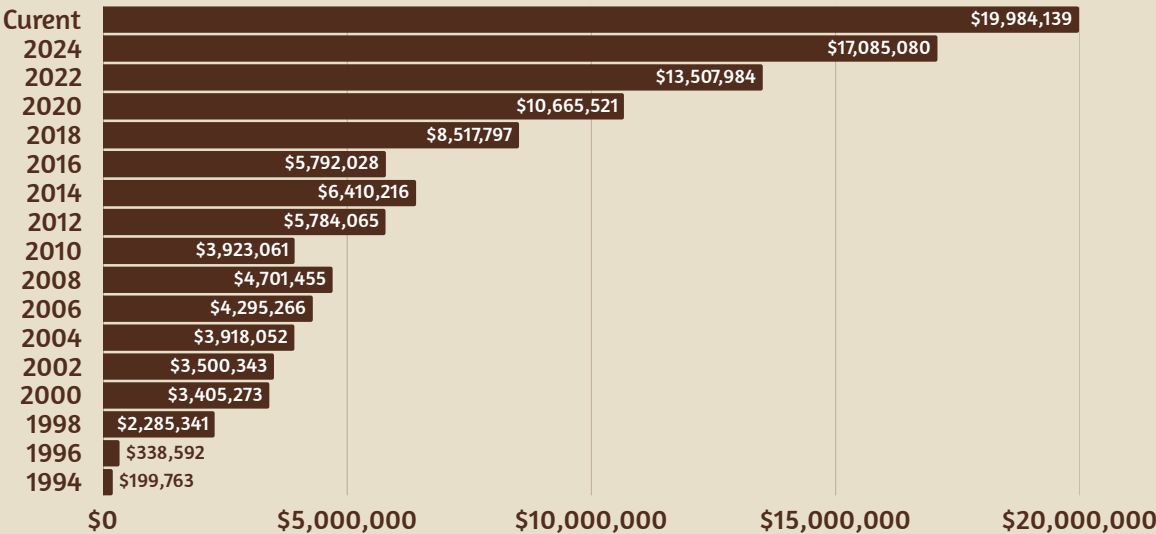
Did you know that tuition covers only about 62% of the true cost of educating a Spartan? The cost to educate a Spartan is \$17,676, and our tuition last year was \$10,900.

Support of the Annual Fund Drive helps close that gap and directly sustains so much of what makes Roger Bacon special. AFD dollars support classroom materials, technology upgrades, student programs, athletics, fine arts, campus ministry, tuition assistance, and our free-and-reduced lunch program. It also allows us to keep the RB experience affordable for our families. Students never pay admission for home athletic events or fine arts performances, every student receives a yearbook; and students aren't charged for parking. Simply put, the AFD ensures every Spartan has the opportunities, support, and experiences they deserve. The current value of our AFD is as of January 8, 2026.



ENDOWMENT

Roger Bacon's endowment is made up of more than 90 individual funds with a combined value of over \$19 million. In keeping with best practices, no more than 5% of the endowment and each endowed fund is withdrawn each year, ensuring the principal remains intact and continues to grow. All funds are pooled and professionally invested, with income carefully tracked so each named fund maintains its value and long-term impact. The current value of our Endowment is as of October 31, 2025.





The “**We Are the Good Soil**” **Capital Campaign** launched in December 2023 with a goal of raising \$8,000,000 for our new atrium and an additional \$2,000,000 for our endowment. As we conclude the second year of this three-year effort, we are incredibly close to reaching that goal. This is the largest capital campaign in school history, and more than 590 generous donors have helped bring us to this remarkable point.

Tremendous progress is being made on the Anne Nurre Heidt Atrium. This 12,000 sq. ft. facility will house our administration, admissions, and advancement offices, allowing us to add five much-needed classrooms inside the main school building. It will also include a 164-seat chapel—the first dedicated chapel in our school’s history—and a 1,000 sq. ft. patio that will serve as a perfect gathering space for future class reunions and other events. We are on pace to have this building complete by the start of next school year.

We are nearing the finish line of this transformative campaign, and we need your help to cross—and **surpass**—our \$10,000,000 goal. And as you’ll see below, there is a compelling reason why going beyond our goal is so important.

WHAT’S NEXT...



As construction on our new atrium continues to move forward, it has become increasingly clear that expanding our on-campus parking is an essential next step to support student and visitor safety and accessibility. We had originally planned to explore this project in the 2027 school year, but the growing demand for parking has accelerated our timeline.

Beginning this spring, we will start construction to expand our East parking lot off Leonard Avenue. Roger Bacon owns three homes on Leonard Avenue, and these properties will be removed to allow for the expansion. The project will add approximately 50 new parking spaces to our existing lot, providing much-needed capacity for our campus.

The expanded parking lot is expected to be completed in time for the start of next school year.

give and
RECEIVE



donate for
FREE

SCHOLARSHIP GRANTING ORGANIZATION

As an Ohio taxpayer, YOU have the opportunity to redirect your tax dollars and support Roger Bacon at the same time! Roger Bacon is a member of the Catholic Education Foundation (CEF) which has been certified by the State of Ohio as a Scholarship Granting Organization (SGO). By donating to Roger Bacon through the CEF-SGO, you can receive a non-refundable Ohio income tax credit of up to \$750 per individual return or \$1,500 per joint return. It is our hope you will take advantage of this opportunity as an addition to your current support of Roger Bacon.

**2025 TAX YEAR SGO
TOTALS SO FAR...**

\$117,600

TOTAL RAISED

173

DONORS



Why Give?

Your contribution goes directly to tuition assistance for Roger Bacon students in need. Your support helps make the gift of a Franciscan education possible.

How to Give:

Scan the QR code on this page or visit www.rogerbacon.org/giving/SGO.

When to Give:

SGO gifts for the current 2025 tax year can be made until **April 15, 2026**.

Need Help or Have Questions?

Please consult your tax advisor regarding your personal tax situation.

You can also contact the Advancement Office at 513-641-1313 or email bspaeth@rogerbacon.org.

NEW INDUCTEES INTO THE RB HALL OF FAME

In November, the Athletic Department honored the latest class of the Roger Bacon Hall of Fame. It was a wonderful evening celebrating some of the athletic excellence that comes from Roger Bacon High School.

Congratulations to the newest members of the Roger Bacon Hall of Fame and award winners!

Athletic Department Appreciation Award (Joe Corcoran Award) - **Tom Burke '69**
Caryl Schawe Award - **Tracey (Thompson) Kornau**

2025 Hall of Fame Inductees:

Vernon Pellman '35	Laura (Brichler) Wyatt '06
Jim Brockman '65	Kurt Rocco '06
Dan Endres '98	Katie (Veatch) Jones '06
Mary (Brunner) Sutton '03	Josh Ungerbuehler '10
Sara (Faller) Jent '05	



"THE VOICE OF THE SPARTANS" TURNS OFF HIS MIC

THANK YOU, TOM BURKE

Following the Girls' Volleyball final home match of their season, the Athletic Department honored the longtime **"Voice of the Spartans"**, former Roger Bacon President and current Major

Gifts Officer **Tom Burke '69**, as he

announced his final match at Roger Bacon.

Tom deserved every bit of thanks for everything he has done,

not just for Roger Bacon Athletics,

but for Roger Bacon High School as a whole.

Tom has served as the public address announcer for many years across multiple sports and has always been the number one supporter of the Spartans. The Spartans will certainly miss hearing his voice during their games in Fogarty!



20 ATHLETIC Fall

Football

1st Team MVC

Jamere Mitchell '26
Hunter Pauley '27
Jaden Tiller '26
Liam Vargo '27
Max Hoffmann '26

2nd Team MVC

Christian Byrd '26
Bubba Smart '26
De'vion Gipson '26
Tom Bedinghaus '27
Joe Coleman '26
Evan Otto '27

Honorable Mention MVC

Max DeFranco '28
Terrance Todd '26

2nd Team All-District

Joe Coleman '26
Hunter Pauley '27
Jaden Tiller '26
Liam Vargo '27
Max Hoffmann '26

Honorable Mention All-District

Jamere Mitchell '26
Bubba Smart '26

1st Team All-City

Joe Coleman '26
Jaden Tiller '26

2nd Team All-City

Jamere Mitchell '26
Liam Vargo '27

Honorable Mention All-State

Max Hoffmann '26
Joe Coleman '26

Girls' Golf

1st Team MVC

Addie Ayers '29
Maddy Sheppard '26
2nd Team MVC
Ella Murphy '26

Girls' Tennis

Honorable Mention MVC

Maggie McCormick '27
Hailey Hutzel '28

25 AWARDS All-Stars

Girls' Soccer

1st Team MVC

Aubrey Kueffer '26
Lizzy Mumper '26

2nd Team MVC

Mia Kleiman '27
Hayden Rolfert '27

Honorable

Mention MVC

Leah Schoster '27
Elise Reilly '27

Boys' Soccer

1st Team MVC

Alex Ervin '26

2nd Team MVC

Caleb Fulton '26

Aaron Ervin '26

Andrew Schneider '26

Honorable

Mention MVC

Jonah Vonerwish '27
Jean-Marie Kipkosgei '26

Cross Country

1st Team MVC

Karis Stoxen '27

2nd Team MVC

Helen Russell '27
Fritz Russell '28
Bryce Fletcher '27

Girls' Volleyball

1st Team MVC

Etellina Jackson '26

2nd Team MVC

Brenna Huber '28
Emma McGraw '29

Honorable

Mention MVC

Morgan Sunderman '26

Claudia Hoffmann '26

1st Team All-District

Etellina Jackson '26

2nd Team All-City

Etellina Jackson '26

Honorable

Mention All-City

Emma McGraw '29
Brenna Huber '28
Claudia Hoffmann '26
Morgan Sunderman '26

Boys' Golf

1st Team MVC

Jude Voss '28
Allister Fike '27

2nd Team MVC

Blake Rohling '28
Henry Fulwiler '28
Ty DuMont '27

2nd Team All-State

Allister Fike '27

SPARTANS AT THE NEXT LEVEL

Congratulations to the following Class of 2026 Spartans on committing earlier this fall to continue their athletic careers at the next level:



Etellina Jackson '26
Volleyball
Mount St. Joseph University



Brittney Hoernschemeyer '26
Volleyball
Mount St. Joseph University



Maddy Sheppard '26
Soccer
Northern Illinois University



Reese Reilly '26
Swimming
Duke University



CROSS COUNTRY QUALIFIES FOR REGIONAL MEET

Roger Bacon Cross Country qualified for the OHSAA DIII Cross Country Regional Meet in October. This is the first time since 2010 Roger Bacon Cross Country qualified for Regionals!



The Boys' team finished in fifth to qualify as a team, and four Girls' Cross Country runners ran at Regionals. There, the Boys' team finished 17th, and the Girls' team's Karis Stoxen '27 earned a top-40 finish!

BOYS' GOLF MAKES IT BACK TO STATE



It was a historic season for the **Roger Bacon Boys' Varsity Golf team**. This year marked the first time in over eighty years that the boys' golf team advanced to the state meet as a team! While there have been several individual golfers who have made it to this meet in that time, this year was the first since 1941 that Roger Bacon advanced as a team to the meet. It was a historic season with several tournament wins and dozens of accolades for the golfers. Congratulations to coach Nick Rosenfeldt who has helped advance three different golfers and now the entire team to the state meet in his tenure! Coach Rosenfeldt was also recently named Division II & III Golf Coach of the Year! The team finished their season in sixth place.



Check out the team's article in the Cincinnati Enquirer by scanning the code!

SOCGER SENIOR HONORED FOR CHARACTER

Andrew Schneider '26 was a force this Fall on the pitch during his senior soccer season. Recently, he was also honored for more than his soccer skills; he was awarded the **Dick Snyder C.I.S. Award**. The award is given to a player who exemplifies Character, Integrity and Sportsmanship. Congratulations on this great recognition Andrew!



FOOTBALL COACH HONORED AND REMEMBERED BY SPARTAN FAMILY

Roger Bacon Football's Director of Football Operations, **Ron Meister**, was a volunteer for the football program for seven years. On January 2, his battle with cancer ended. He is remembered fondly by the entire Roger Bacon community. Football head coach, Mike Blaut said, "His caring, devotion, and commitment to the football program will never be equaled. For those of you that didn't know Ron, you missed out on a man who knew no strangers and was 110% behind the RB community. He was our head of football operations, and meticulously took care of all the thankless jobs Fr Alan and Br Gene did for all those years as AD's. The coaches, players, and families that knew Ron, know what a treasure he was and will miss him dearly."

Ron was known for his positive outlook on everything. His message below is a great example of his Spartan attitude:

"My family & I are of very strong faith & we completely believe that God has his plan for us all. I believe that your work on this story is within his plan. If there is anyway "my story" (a story that wouldn't get told/ heard without YOU,) can help, ease any pain, encourage, inspire, motivate or reassure hope within another, I am completely, both honored & committed.

My message is that we are ALL fighting something, that the simplest act(s) of kindness (a choice that we ALL have) shared with one another can ease this suffering. And compounded just might make this whole world a better place!"

To honor Ron's extraordinary legacy, the Meister family has the hope of establishing the **Ron Meister Endowed Scholarship**. Scan the QR code to support!



AN AWARD TWO YEARS IN THE MAKING

For the last twenty years, the Roger Bacon Football team has been volunteering at the annual Thanksgiving Day Race in downtown Cincinnati. This year, the program was selected as the **Birds of a Feather Award recipients** for the 2025 Thanksgiving Day Race for their commitment over the years! This is awarded each year to a group who either participates or volunteers their time and effort to put on such an amazing event.

Congratulations to Coach Mike Blaut '88 and the entire football program on this amazing recognition and their dedication for service to others.

Join the Roger Bacon Alumni Association for the *2026 Spartan Sip & Social*



featuring wines from Assisi & Fogarty Vineyards and entertainment from Sound Body Jazz Orchestra

Saturday March 7th
7-10pm

\$50 per Person
includes open bar,
light bites, valet parking



Scan this code
to purchase
your tickets!

Reunions & Gatherings

61

The **OLA Class of 1961** is planning their 65th Reunion – contact Cecelia Gleisnger (Craig) cgleisinger@yahoo.com for more information.

71

The **RB Class of 1971** is in early planning stages for their **55th Reunion** this year. Contact **Alan Kalb** alan1kalb@gmail.com to help or for more information.

76

Early planning stages are underway for the **RB Class of 1976 50th Reunion**. Contact **Dan Ryan** danryan757@gmail.com to help or for more information.

06

The **Class of 2006** is planning their **20th Reunion** – contact Annie Karle (Kathman) akarle@rogerbacon.org or Chelsey Hausfeld (Ahlers) hausfeldchels@gmail.com for more information.

11

The **Class of 2011** is planning their **15th Reunion** – contact Brandon Spaeth bspaeth@RogerBacon.org.

16

The **Class of 2016** is planning their **10th Reunion** – contact Macey Bierman biermanmacey@gmail.com or Deasia Davis deasia36@icloud.com

**CALLING ALL SPARTANS
AND ANGELS WHO
GRADUATED IN YEARS ENDING
IN 1 OR 6:**

THIS NEXT YEAR COULD BE A GREAT OPPORTUNITY FOR A REUNION. IF INTERESTED IN PLANNING AN EVENT FOR YOUR CLASS, PLEASE REACH OUT TO BREED@ROGERBACON.ORG TO GET STARTED!

1851 – 2026

175

YEARS



Sisters of St. Francis
OLDENBURG + INDIANA

SAVE THE DATE

CELEBRATING 175 YEARS OF
SERVICE AND DEDICATION

In celebration on the 175th Anniversary, the Sisters of St. Francis, Oldenburg, is organizing an All-School Reunion for St. Mary Academy and Our Lady of the Angels former students. Come meet the Sisters, tour the convent, eat lunch with your former classmates, celebrate Liturgy, and just have a great time!

10 | 24 | 26

Motherhouse Chapel
22143 Main St., Oldenburg, Indiana

**STAY TUNED FOR MORE INFORMATION
COMING IN MAY**

Questions? - Contact Sister Kathleen Branham, OSF at kathleenosf@marian.edu or Melinda Starkey at melinda.starkey@oldenburgfranciscan.org



34th Annual Girls Trip!

This tradition of a girls trip to Nashville started in 1990 and is still going strong. We treasure this time together every year. OLA alum from left to right: **Lisa Wright '77 Jan Trauth '78 Elaine Palumbo Flannery '78 Kim Bothe Graham '77 Laurie Lea Gellenbeck '77 Linda Schwemberger Coffaro '77 Debbie Schwemberger Middendorf '74**



60

The **RB Class of 1960** Luncheon took place on October 9, 2025 at Pebble Creek Golf Course. President Steve Schad was able to attend and enjoy quality time with the Spartans.



65

The **OLA Class of 1965** celebrated their 60th reunion in October.



65

RB Class of 1965 gathered at RB in the Fall.
 FRONT ROW: Denny Scheidt, Jim Brockman, David Cannon, Jim Vanden Eyden, Thom Vollmar
 SECOND ROW: Rick Carnevale, Schmalz, Gary Hilsinger, Gino Servizzi, Dave Oakley, Jim Daley
 THIRD ROW: Dennis Lauck, Ed Tierney, Rusty Brinkman, Skip Schoettmer, John Fullmer, Tom Fahey
 BACK ROW: Peter Lloyd, Dave Foley, Jim Brigger, Tom Vogeler, Don Willen, Joe Beck



69

69

Members of the **RB & OLA Class of 1969** posing with their class scholarship student, **Kendra Gee '26**, after First Friday Mass.

75



The **OLA Class of 1975** met at RB for mass and then headed to Wiedemann's after in September.



Congratulations to our Alumni Award Recipients!

Mark Piepmeier '72 – Astrolabe Award; **Sherrie Lakes '71** – Amaranth Award; **Kelly (Rickenbaugh) Marsh '91** – Spartan Award; **Mose '81 & Barb Demasi** – Roger Bacon Award.

Each of these honorees has made a lasting impact through their character, faith, service, and dedication to others. Their stories remind us what it truly means to be Spartans for life.

Nominate for
Alumni Awards
by scanning
this QR code:



80



Members of the **RB Class of 1980** headed down to the ballpark together this past fall!

05



The **Class of 2005** partied at the St. Bernard Pub in October.

85



The **Class of 1985** met at Pebble Creek Golf Course in October.

10



A group from the **Class of 2010** got together after the Homecoming Game at Wiedemann's.

95



The **Class of 1995** reunited in October for a grand gathering.

15



The **Class of 2015** had a raucous time at Rheingeist.

ALUMNI

Be Inspired...

"Ken, I'd like to make it a true Daily Double."

*"Here is your clue in the Category 'Famous Alumni':
This 2001 Roger Bacon alumna will appear on Jeopardy."*

Answer: **"Who is Kelly Anneken '01?"**

Kelly, currently living in California, competed in September on Jeopardy. Her younger brother John appeared on the Alex Trebek Stage twelve years ago, achieving a three-game streak.

Submitted by **Mellen Moors-Dressing**, Kelly's biggest, non-family-member fan who is SO proud of her!



Bryan Zinser, RB Class of 2008, participated in a mission trip with **Be the Light**. The group built a small house from the ground up, providing housing for a family of 5 in Tijuana, Mexico. Working in scorching temperatures, they managed to raise the entire structure and have it live-in ready in one week!



Playing for the Cincinnati Colt 45's in the Roy Hobbs 70 and over group in Fort Myers, FL are **Jim Schackmann '70, Jim Brockman '65 and Mike Day '70**. The boys brought home the Championship this past Fall.

ACCOMPLISH SOMETHING BIG? SEE A FELLOW SPARTAN? PLEASE PROVIDE ANY ALUMNI STORIES TO ALYSSA FLADING (AFLADING@ROGERBACON.ORG)

Mark Piepmeier '72 was recently recognized by the City of Sharonville as a member of the 'Sharonville Society of Honored Citizens.' Before the city council meeting held in September, he was recognized for all his hard work and dedication to the community. The Sharonville Facebook page stated:



"He is a true pillar in our community. Not only did he serve in elected office for over twenty years, he coached numerous youth sports teams for SYO and St. Mike's, and was instrumental in our Memorial Day ceremonies. Thank you, Mark!"



NEWS

...Stay Connected

The bronze plaque seen here, with a **"Franciscan Blessing"** is a gift from the past-President of Endeavor Construction Company, **Dave Beiersdorfer, Roger Bacon Class of 1972**. The plaque served as a source of inspiration for the employees of the company and a reminder of the Franciscan education he received at Roger Bacon. His son, Dave Jr. (seen on the left), is the Senior Project Manager for the Huesman Group (HGC), the general contractor for the new atrium. Dave Beiersdorfer, along with his wife Stephanie, donated the plaque for use in the new atrium.



Recognizing a special Veteran...

Over the summer, the Haap family had the opportunity to formally recognize their great-grandfather and honor him for his service to our country. **Pvt. John Haap** was a Civil War Veteran of the E Company 183rd Regiment of Infantry Ohio Volunteers Third Brigade 2nd Division 23rd Corps U.S. Army. He served from October 1864 to July 1865 and fought three battles in Tennessee. When he passed away in 1887 after being ill for a number of years, his family likely could not afford a tombstone. John's great-grandson, **Mike Haap '59**, joined the Sons of Union Veterans of the Civil War and they helped host a ceremony for John Haap by dedicating a tombstone for his grave. John's other great-grandchildren, **Kay (Haap) Schindler '54** and **Don Haap '63** were in attendance for the ceremony. **Jack Haap '55** was unable to attend. After 138 years to the day, the family was thankful their great-grandfather's final resting place was memorialized properly with a tombstone. Note: To see the TV coverage of the ceremony, search for John Haap on YouTube.



Bacon Bits

Join us in welcoming the cutest new additions to the Spartan family!



Brandon Spaeth '11 and wife **Hannah** recently welcomed baby boy, Jackson (JJ), in September.



Lynde (Devlin) '10 and **Nick Wilking '10** recently welcomed baby boy, Jack in October.

Alumni Business Spotlight



Dennis '71 is the son of **Paul Valerius '40** and the brother of **Paul Valerius '62**. Dennis and his cousin Greg (son of **Fred Valerius '39**) stopped in for a visit in the Fall. Dennis is on the left and Greg is on the right. It was a great day for the cousins to reminisce.

Rick Sollmann '68 welcomed back some of his 1968 classmates for a tour of RB and lunch!
Michael Gantt, Bill Woerman and Tony Conte!



Spartan Sweethearts

Sue (Ohe) '56 and **Frank Weyer '55** celebrated their 67th wedding anniversary on September 26th. They met at Gutzweiler's Grove, they continue to reside in Cincinnati. They have three children, 13 grandchildren and 4 great grandchildren.



Ray Drake '61 and **Joan (McClanahan) Drake '62** were married on Sept. 4, 1965 making this their 60th wedding anniversary. They met at Roger Bacon school dance after a RB football game! The happy couple now lives in Florida and enjoy golf and the seashore.

KNOW A SPARTAN/ANGEL COUPLE THAT HAS BEEN MARRIED LONGER? SEND US THEIR INFORMATION BY EMAILING AFLADING@ROGERBACON.ORG.



Matt McManus '01 is making a meaningful impact as a Partner at **Triple Crown Wealth Management**, where he specializes in helping individuals — especially first responders — with state pensions navigate retirement and long-term financial planning. Matt works closely with clients to understand how their 457 plans align with their pensions, maximize the value of their greatest asset, and use money as a tool to find peace and pursue their next purpose.

A former golf professional turned financial advisor, Matt brings a unique perspective shaped by both personal experience and diligent study. Having seen firsthand the pitfalls of poor money management, he is on a lifelong mission to help others avoid those same traps. Backed by his own wellness journey, Matt also speaks throughout the Cincinnati region on retirement and financial readiness, living out the belief that we are all called to serve one another and lead well-balanced lives—values rooted in his Roger Bacon foundation.

If you have questions about the services of Triple Crown Wealth Management, please contact Matt at matthew.mcmanus@equitable.com.

DO YOU WANT TO HIGHLIGHT YOUR SMALL BUSINESS IN THE NEXT MAGAZINE? E-MAIL NWILKING@ROGERBACON.ORG WITH YOUR INFORMATION.

An Incredible Career



Cammy Niesen '22 recently wrapped up her legendary volleyball career at Ole Miss. Niesen left her legacy as the greatest libero in program history, setting the program's all-time digs mark with 1,853, while ending her career in the top-10 in SEC history with the mark. Niesen finished the season with 458 digs, 115 assists, 19 service aces and a .982 reception percentage, making only eight errors on 440 attempts.

Her excellence extended well beyond the court. Cammy will soon graduate with a degree in chemical engineering and was recently named a College Sports Communicators (CSC) Academic All-District honoree, advancing to the national ballot for CSC Academic All-America consideration. This recognition marks the third consecutive season she has earned the honor and adds to an already outstanding academic resume that includes becoming the first Rebel ever named SEC Scholar-Athlete of the Year in 2024.

Cammy's legacy began long before college at Roger Bacon High School, where she still holds the all-time digs record with 1,820. As a Spartan, she earned multiple Player of the Year honors along with All-State, All-City, and All-League recognition - all while serving as an Assisi Scholar and maintaining first honors every quarter.



Mary Kate DeWees '19 (Director of Operations - University of Alabama) and **Braden Rice '25** (team manager - University of Cincinnati) had a Spartan volleyball reunion at the Chattanooga Classic. The Bearcats won 3-0!

Congratulations to Ben Powers '21, who has been named the 2025 Greenhills Firefighter of the Year!

This marks the second consecutive year a Roger Bacon graduate has received this honor—following fellow Class of 2021 alum **Chris Shipley**, who earned the award in 2024.



Ben Powers '21



Chris Shipley '21

Congratulations are in order for Jim Gruenwald '67.

Jim will be inducted into the SAY Soccer Hall of Fame. Jim had a huge impact on the SAY soccer community by opening their first office in 1979 to turn the organization into a professional business operation from an all volunteer organization which now has over 400 community chapters across the country. Jim also volunteer as the scorekeeper for JV & Varsity RB basketball for 16 years and proudly was a substitute freshman basketball coach for 1 game in 1984. "We beat PM 43-37 then I retired as the only undefeated basketball coach in RB history."

"YOUR INDUCTION IS IN RECOGNITION OF THE SIGNIFICANT CONTRIBUTIONS YOU HAVE MADE IN PROMOTING THE VALUES OF SAY AND YOUR OUTSTANDING LEADERSHIP AS NATIONAL EXECUTIVE DIRECTOR. ADDITIONALLY, WE WOULD LIKE TO RECOGNIZE YOUR EXCEPTIONAL CONTRIBUTIONS TO THE NATIONAL BOARD AND SPREADING THE PHILOSOPHY OF SAY ACROSS THE COUNTRY."



Born to Eternal Life

*The following members of the Roger Bacon family
have been born to eternal life. Please join us in
remembering them and their families in your prayers.*

Mary Ann (Beccaccio) Peters '45
Rose (Butz) Biederman '46
Marie (Schulte) Schoettmer '46
Mary Jane (Volk) Hoebbel '46
Elaine (Ober) Mushaben '47
Herb Pahren '47
Mary Lou (Rucktaschel) Traut '47
Dolores (Geers) Rumpke '48
Laverne (Berger) Strittholt '48
Clare (Seufert) Dunham '49
George Seitz '49
James Froehle '50
Joseph Hammoor '50
Geraldine (Sullivan) Boehm '50
Joan Woll '50
Tom Willke '50
Dr. Thomas Fogarty '52
Thomas Frey '52
Mary (Hils) Telles '52
Ronald Dauwe '53
Ruth Drewes '55
August Kramer '55
Jane Ann (Lammert) Schildmeyer '55
Gerald Pfeiffer '56
Charles VonderMeulen '56
Patricia (Geisel) Babey '57
David Biederman '57
Julie (Grant) Hurts '57
Michael Bonvillain '58
Donald Diesel '60
Michael Ellert '60
John Engel '60
Carolyn (Wenning) Bolten '60
Barry Strasser '61
Charlene (Oehler) Wash '61
Robert Wilking '61
Lawrence Handorf '62
Terrence Kitte '62
Richard Nelson '62
James Dinwiddie '64
Judith Haas '63
Richard Lakes '64

James Vanderhoff '64
Laverne (Dinwiddie) Diesel '65
Joe Norton '65
Harry Spraul '65
Scott Young '65
Kenneth Hennel '66
Stephen Scheurer '66
Robert Nurre '67
Ralph Layer '68
John Curso '69
Jeffrey Harmon '69
Maria (Leonardi) Burr '69
Douglas Ferguson '70
Karen Keppel '70
Teresa (Pfeiffer) Ayers '70
Gary Smith '70
Robert Faller '71
Vicki (Welsh) Faller '71
Jerome Holthaus '72
Bruce Reynolds '72
Nicholas Hurr '73
Ronald Henke '74
Don Hines '74
David Schildmeyer '74
David St. Clair '77
Jim Deno '78
Jason Faulkner '81
Ronald Bellman '82
Henry Ausdenmoore '83
Becky Fitzhugh '83
Ron Bellman '85
Bill Petersman '86
Pat Crail '87
Harold James '91
Tim Blum '93

RB Family

Carlie Berry
Gina French
Ron Meister
Hilda Willenborg

This year's GRAND RAFFLE prize is \$10,000!

And you could win it!

Our 38th Annual Evening for Excellence is coming up on April 18th! The biggest prize of the night is our

\$10,000 Grand Raffle sponsored by the Roger Bacon Alumni Association.

Thank you to the RB Alumni Association for their generosity and continued support of our school and our students!

Raffle tickets can be purchased online by scanning the QR code below or by mail.

If sending in the mail, cut out the form below and mail it to:

Roger Bacon High School (4320 Vine Street Cincinnati, OH 45217) along with a check made out to Roger Bacon High School and write "Grand Raffle" on the memo line.

PLEASE DO NOT SEND CASH THROUGH THE MAIL.

The winner will be drawn at the Evening for Excellence on April 18, 2026. You do not need to be present at the Evening for Excellence to win. If you want additional tickets, contact Wanda Hill at 641-1313 or at whill@rogerbacon.org.

The more chances you buy, the better your odds!

All proceeds from the raffle will benefit the students and programs at Roger Bacon High School.

Online raffle tickets sales will close at 12PM on Wednesday, April 15, 2026.

E F E G R A N D R A F F L E

sponsored by the Roger Bacon Alumni Association

Name: _____

Address: _____

Phone: _____

e-mail: _____

a m o u n t o f t i c k e t s

- ☐ 1 ticket for \$25 ☐ 5 tickets for \$100
☐ 12 tickets for \$200



A donation is not required to enter.



Non-Profit Org.
U.S. Postage
PAID
Cincinnati, OH
Permit No. 5420

mark your calendar!

ROGER BACON HIGH SCHOOL
e f e
38TH ANNUAL
EVENING FOR EXCELLENCE
APRIL 18, 2026

5:30PM Cocktails and Dinner
8PM Live Auction
Silent Auction is held 5:30-8PM

For more information,
email:
Wanda Hill
(whill@rogerbacon.org)